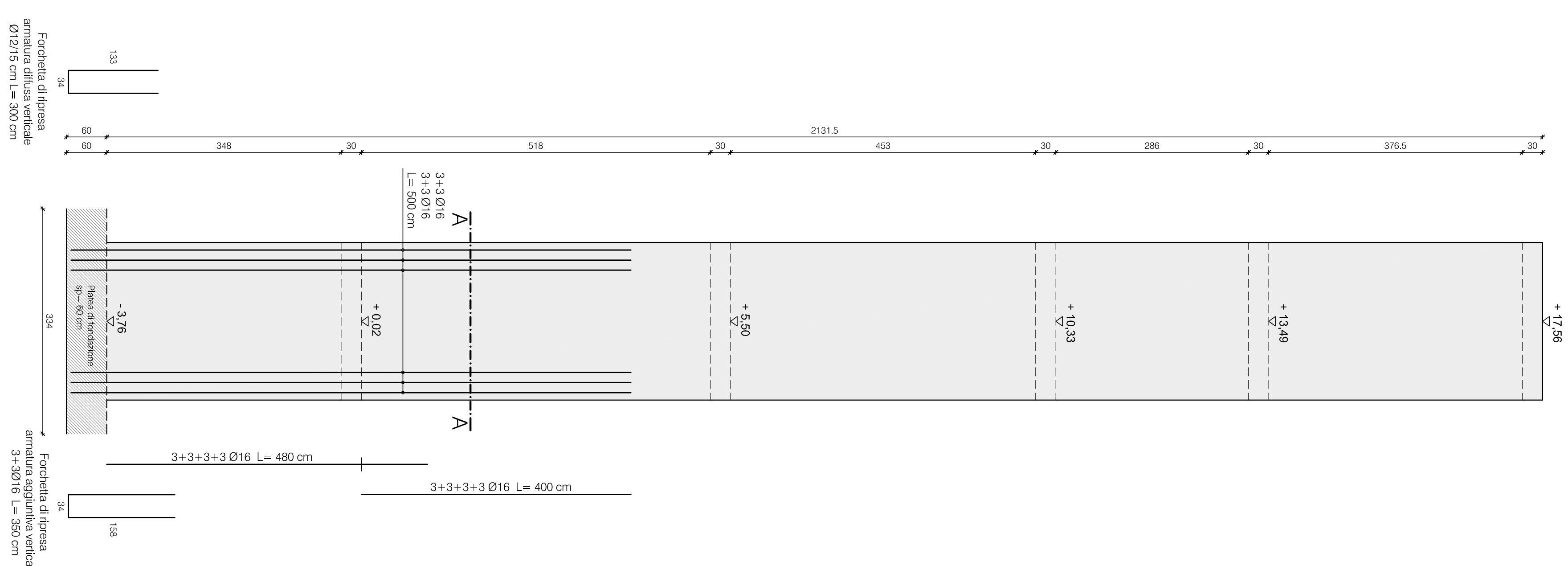
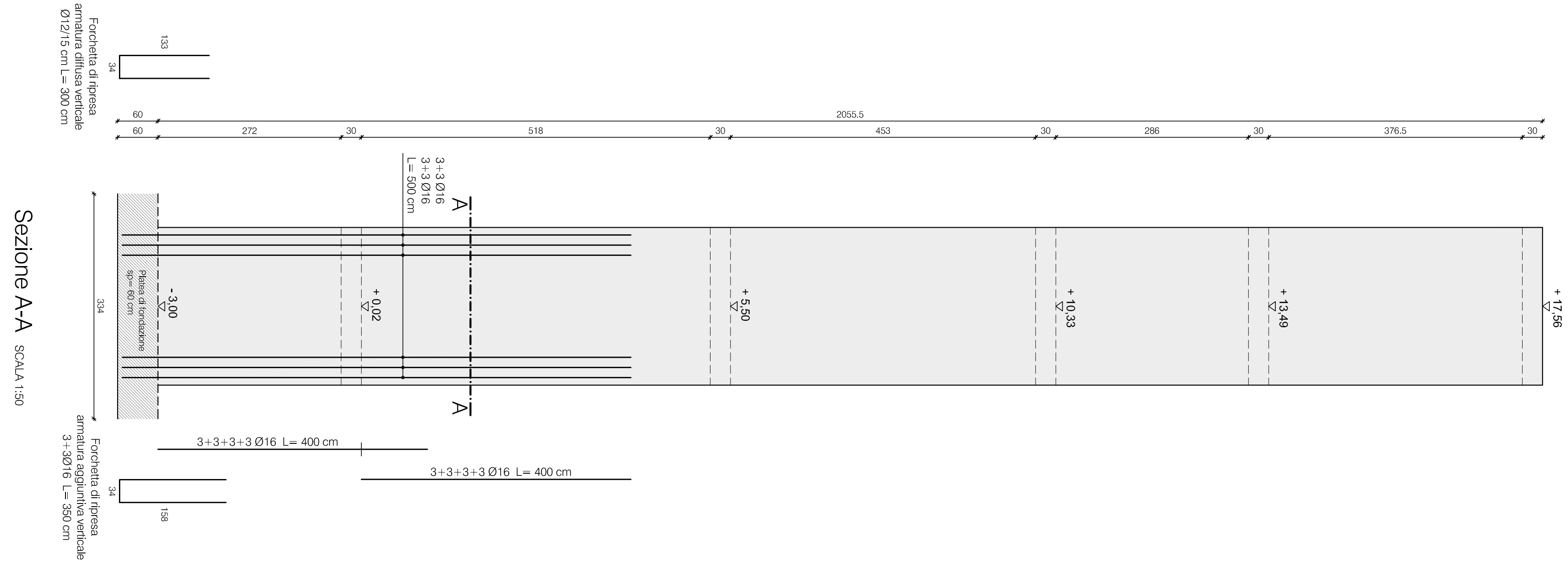


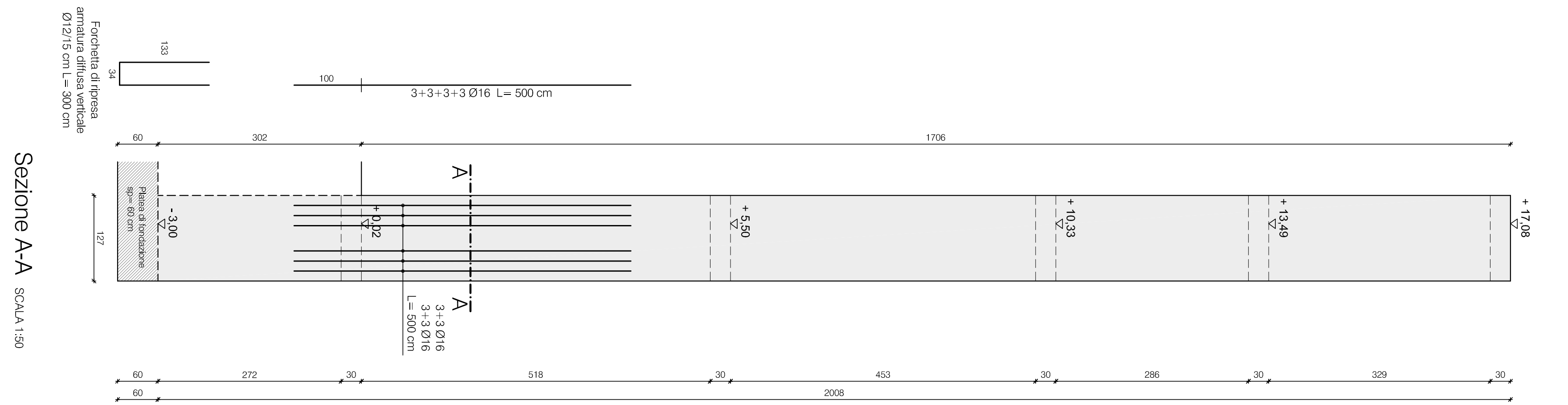
SETTO S4 SCALA 1:50



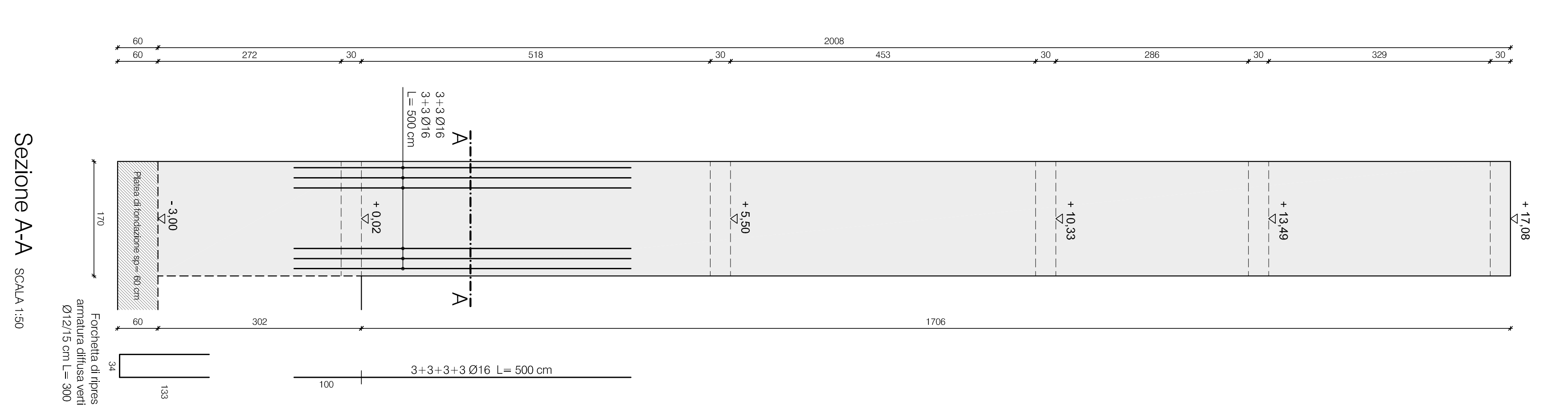
SETTI S3 - S5
SCALA 1:50



SETTO S2B SCALA 1:50



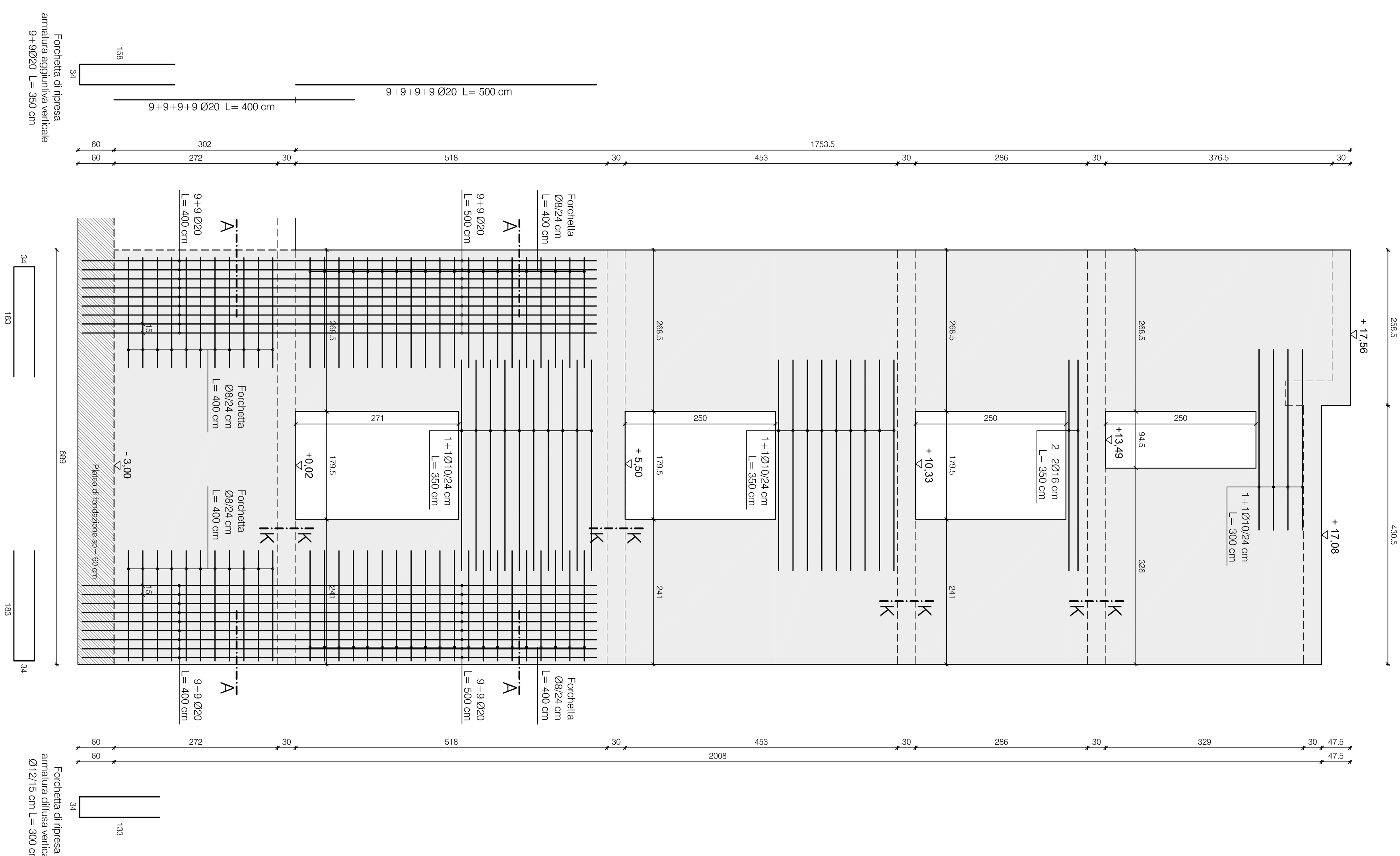
SETTO S1B SCALA 1:5



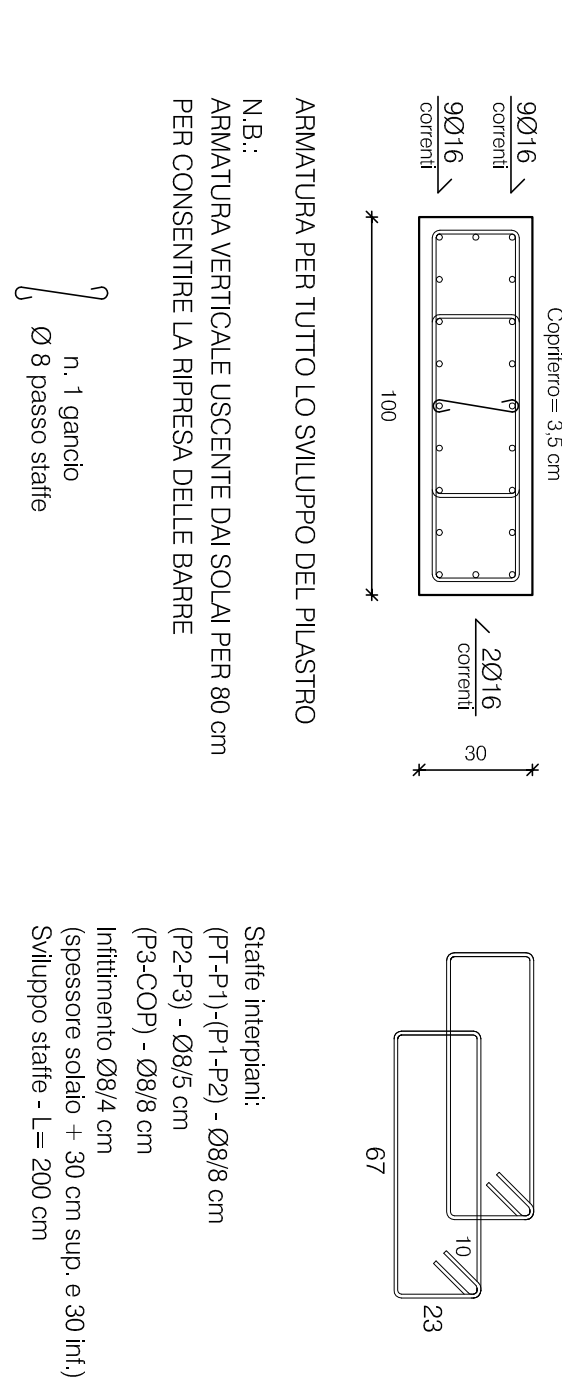
SETTO S2A
SCALA 1:5



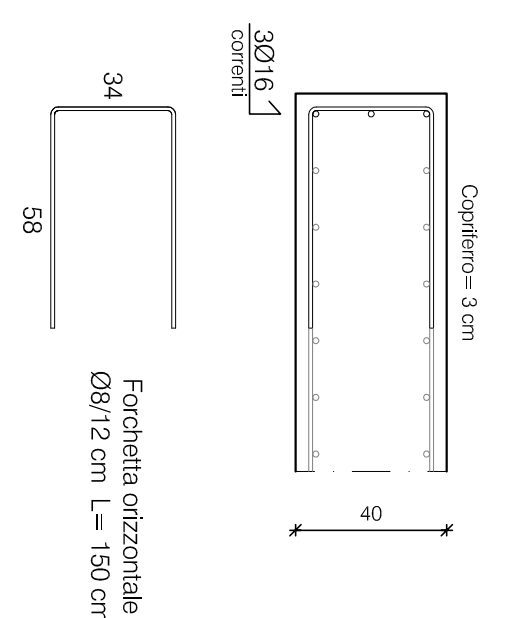
SETTO S1A SCALA 1:500



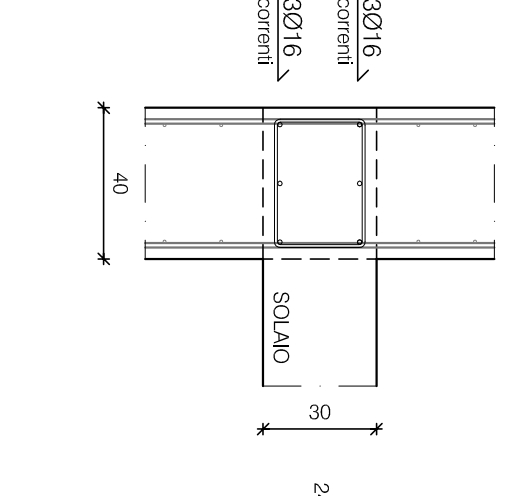
11.2 PILASIHRI - P1 SCALA 1:2



PARTICOLARE TESTE SET
E SPALLA PORTE SCALA 120



SEZIONE K-K SCALA 1:20



N.B.: NELLE SEZIONI CORRENTI SOVRAPPORRE
LE ARMATURE PER ALMENO 40 Ø

[illegible]

**STUDIO
ARCHITETTO
MAR**

Arch. Giovanni Mar

VIA CASTELLANA 60, 30174 VENEZIA - ZADARO
tel. 041-684477 fax 041-684298


CONSULENTI

STUDIO DI

CONSULENTE STRUTTURE

D.P. C. INGEGNERIA S.r.l. via edile Quarto
C.so Venezia 10 - 00187 Roma
Tel. 06/47810241 Fax 06/47810242
00541090252 06/4781223720 06/47810423

CONSULENTE IMPIANTI


Ing. Giovanni Circiolo

TECNOLOGIE S.r.l. Via Fria Venezia
36010 Montebelluna (TV) Italia
0423/320222 fax 0423/10147; M:041
5101542

ING. GIOVANNI CIRCIOLLO

SCALA	1:50
PROGETTO	TAV.

ST.02-A

Polo Museale delle Scienze di Palazzo Cavalli - Lotto 3 - Progetto esecutivo

INGRESSO PRINCIPALE
Setti e pilastri in c.a.

DITTA

Università degli Studi di Padova

prodotto da/elaborazione grafica: GIOVANNA MAR
nome file: 06-14-ESECUTIVO_05_2015_P.T.dwg