

STUDY WITH US

UNIVERSITY OF PADOVA

FOUNDED IN
1222

THE UNIVERSITY

The University of Padova was founded in 1222 and is one of Europe's oldest and most prestigious universities.

Nicolaus Copernicus, Galileo Galilei, Andrea Vesalio, William Harvey, Pietro d'Abano and Carlo Goldoni are just some of the scientists, physicians, philosophers, jurists and writers who have made Padova a landmark for the discovery and spread of European science and culture.

It was at Padova that Elena Lucrezia Cornaro Piscopia became the world's first woman to be awarded a degree when she graduated in Philosophy in 1678.

The University of Padova, loyal to its motto *Universa Universis Patavina Libertas*, has always been a bastion of free thought, study and research.

Today, Padova is a major multidisciplinary university whose lecturers, students and staff account for almost one third of the town's population. Its 8 schools (Agricultural Sciences and Veterinary Medicine, Economics and Political Science, Engineering, Law, Human and Social Sciences and Cultural Heritage, Medicine, Psychology, Science) and 32 departments ensure that Padova offers a broad and varied range of subjects that cover all fields of learning.

The University is also the scientific and cultural heart of Italy's industrious north-east, providing highly specialised training for the area's 7-million-plus residents and its 650,000-plus businesses, a role made possible by its extensive network of campuses located across the Veneto region.

OVER
58,000
STUDENTS ENROLLED

8
SCHOOLS

32
DEPARTMENTS

1

UNIVERSITY
HOSPITAL

1

VETERINARY
HOSPITAL

1

EXPERIMENTAL
FARM

16

UNIVERSITY
CANTEENS

1

SCHOOL OF
HIGHER EDUCATION

29

LIBRARIES

2,100

TEACHING
STAFF

OVER
12,000
GRADUATES
EACH YEAR

2,300

TECHNICAL AND
ADMINISTRATIVE
STAFF

10 REASONS FOR STUDYING IN PADOVA

A BROAD RANGE OF MULTIDISCIPLINARY COURSES

Padova is a university that offers a comprehensive and continually updated variety of courses.

SUPERIOR EDUCATION

It ranks among Italy's leading universities for teaching quality and provides students with a solid academic background and excellent training. Graduating from the University of Padova is the culmination of an ambitious goal and a highly prestigious achievement

A LEADING INTERNATIONAL UNIVERSITY FOR RESEARCH

The University, ranked 151-200 in the 2017 Academic Ranking of World Universities (ARWU), is Italy's top-rated university for research quality in the first two reports by the country's National Evaluation Agency for University Systems and Research (ANVUR).

It is also one of Europe's most highly cited universities.

SERVICE QUALITY

According to Almalaurea, Italy's graduate survey consortium, 9 out of 10 students are satisfied with their academic career and student life at the University of Padova.

ONE OF EUROPE'S OLDEST AND MOST RENOWNED UNIVERSITIES

It was founded in 1222 by students and lecturers in a bid to spread freedom of thought within study and teaching. The University is almost 800 years old.

AN INTERNATIONAL COMMUNITY

Padova has a long tradition in international cooperation. It also participates in the leading international networks, and its research and teaching projects involve students and lecturers from all over the world.

FINANCIAL INCENTIVES

Padova's fees are extremely competitive when compared with those of other top-ranking European universities. It also provides a vast range of incentives for the most-deserving students, or those in financial difficulty.

A STUDENT-CENTRED TOWN

The university affords a unique learning environment and is intertwined with the town and its layout. Its research centres and campuses are located across the town, and its students account for 30% of the local population.

A UNIQUE SETTING

Padova combines history, culture and art with thriving businesses in every sector.

STRATEGIC POSITION

Efficient transport links with the main Italian and international cities mean that the town is the ideal base from which to travel for business and pleasure.




AL
RETTORE

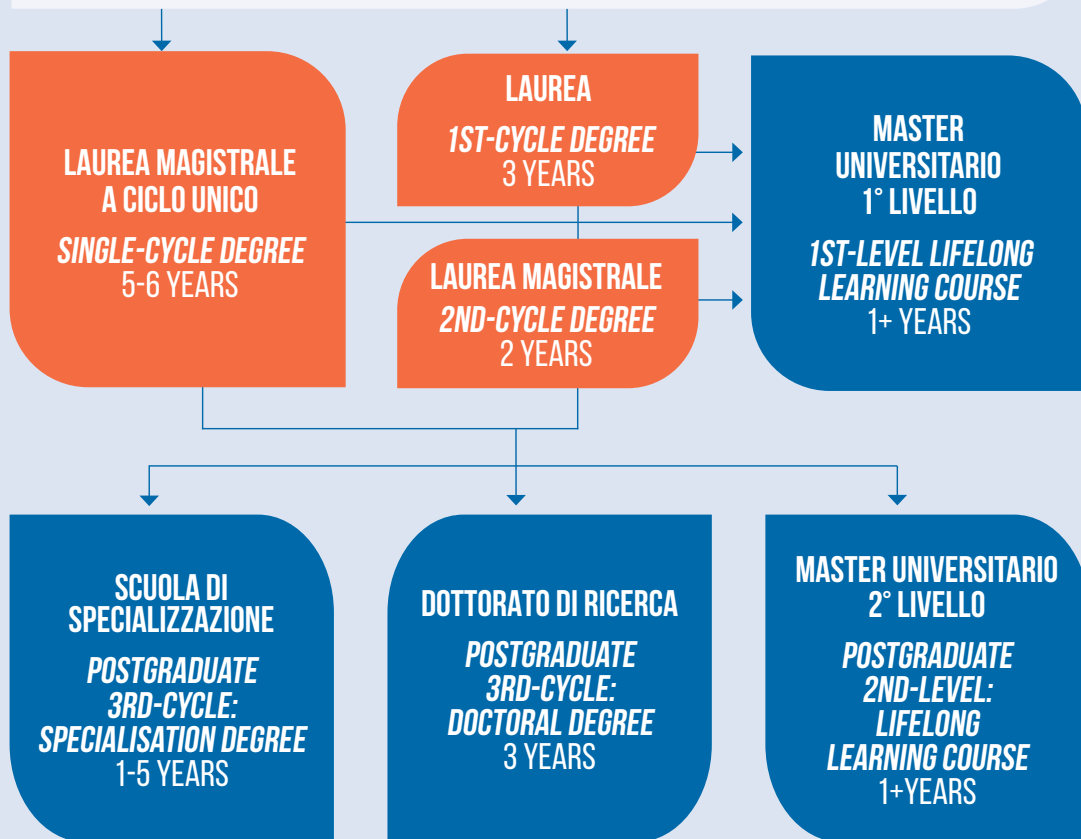


ITALY'S UNIVERSITY SYSTEM

SCUOLA PRIMARIA *PRIMARY EDUCATION* 5 YEARS

SCUOLA SECONDARIA DI 1° GRADO *LOWER SECONDARY EDUCATION* 3 YEARS

SCUOLA SECONDARIA DI 2° GRADO *UPPER SECONDARY EDUCATION* 5 YEARS



FIRST-CYCLE DEGREE **LAUREA - BACHELOR**

Provides a solid background in general methods and content, as well as in specific professional skills.

Admission requirements: at least 12 years of prior education

Leads to: *2nd cycle degree; 1st level lifelong learning course*

Duration: 3 years - 180 credits

SINGLE-CYCLE DEGREE **LAUREA MAGISTRALE A CICLO UNICO**

Ensures advanced training for regulated professions (e.g. medicine and surgery, veterinary medicine, pharmacology) and activities requiring a high level of specialisation.

Courses in: Medicine and Surgery, Dentistry, Veterinary Medicine, Pharmacy, Chemistry and Pharmaceutical Techniques, Law, Building Engineering and Architecture, and Primary Teacher Education

Admission requirements: at least

12 years of prior education

Leads to: *PhD; specialisation school; postgraduate 2nd level lifelong learning course*

Duration: 5 or 6 years - 300 or 360 credits

SECOND-CYCLE DEGREE **LAUREA MAGISTRALE - MASTER**

Provides advanced training for highly specialised professions in specific fields.

Admission requirements: 1st cycle degree (Bachelor). Special requirements may apply (e.g. a minimum degree outcome)

Leads to: *PhD; specialisation school; postgraduate 1st and 2nd level lifelong learning course*

Duration: 2 years - 120 credits

LIFELONG LEARNING COURSE

Builds on previously acquired knowledge to provide specific professional skills.

Admission requirements for a Level 1 lifelong learning course: *1st cycle degree (Bachelor)*

Admission requirements for a

Level 2 lifelong learning course: *2nd cycle degree (Master); single-cycle degree*

Duration: at least one year - 60 credits

SPECIALISATION COURSE

Provides knowledge and skills for highly specialised professions, mainly in medicine, healthcare and surgery.

Admission requirements: *2nd cycle degree (Master); single-cycle degree.*

Duration: a maximum of 6 years

RESEARCH DOCTORATE **DOTTORATO DI RICERCA - PHD**

Aims to teach students the correct method for advanced scientific research at universities and public or private businesses. Alternatively, it provides a high level of professional skills.

Admission requirements: *2nd cycle degree (Master); single-cycle degree*

Duration: 3 years



ENROLLING AT THE UNIVERSITY OF PADOVA

Graduates with an international degree who wish to continue their education in Italy are always welcome at the University of Padova.

Admission procedures vary in accordance with applicant status (e.g. nationality, country of residence, qualification type). The University of Padova supports students in their university choice with a series of introductory and guidance meetings held by trained staff during the whole academic year.

ENROLLING IN A COMPLETE DEGREE COURSE (LAUREA - LAUREA MAGISTRALE A CICLO UNICO - LAUREA MAGISTRALE)

Admission calls for applications contain all of the information needed to apply, including: number of places, pre- and enrolment deadlines and methods, admission requirements and tests, when envisaged. They are published annually and are available from the course descriptions at <http://en.didattica.unipd.it/>. Course admission is generally divided as follows:

- **Limited places:** the number of places available is established each year either by the university itself, or on a national basis by Italy's Ministry of University and Research (e.g. the *single-cycle degree* in Medicine and Surgery);
- **Compulsory admission test:** no limit on places. Applicants, however, need to take an admission

test to see whether they have an appropriate academic background;

- **Admission requirements:** no limit on places. Applicants, however, must have all of the compulsory course requirements. They may also be required to sit an admission test.

Non-EU citizens not resident in Italy may apply for a course only when it envisages a quota for them (*contingente*). For information on application procedures for degree courses held in English, please visit www.unipd.it/en/study-english and select your category (European citizen – Non-European citizen residing in Italy – Non-European citizen residing outside Italy). You will be taken through the procedure step-by-step and told what documents are required. For information on application procedures for degree courses held in Italian, please visit www.unipd.it/en/study-italian and select your category (European citizen – Non-European citizen residing in Italy – Non-European citizen residing outside Italy). You will be taken through the procedure step-by-step and told what documents are required. Applicants with an international qualification must provide several documents including the **Declaration of Value** (*Dichiarazione di Valore*) from the Italian consulate or embassy in the country where they were awarded their degree. It compares the value

ENROLLING AT THE UNIVERSITY OF PADOVA

of non-Italian qualifications with those issued by the local education system. Lessons begin in September and October each year.

ENROLLING FOR SINGLE UNITS

The University of Padova offers international students and graduates the opportunity to attend up to 5 individual units per academic year and to sit the respective examinations without being enrolled in the complete course. A fee will be charged for enrolment in each unit. Who can apply:

- Students of any nationality enrolled at a state or a private university in Italy or abroad. Current University of Padova students are not eligible.
- Graduates of any nationality who need to extend their curriculum with additional examinations in order to be admitted to a *Master* degree course, specialisation schools, public competitions, etc.
- Citizens of any country who are not currently enrolled at a university, but wish to improve their academic and/or professional curriculum.

Enrolment in single units is not available for the following degrees: Building Engineering and Architecture, Primary Teacher Education, Veterinary Medicine, Dentistry, Medicine and Surgery, and all first-cycle degree courses held at the School of Medicine.

www.unipd.it/en/single-course-units

ENROLLING FOR A PHD

The University of Padova strongly prioritises third level education and has been recently expanding its support for research training, in order to ensure the highest standards possible. Complete descriptions of research fields, methods and candidate-selection criteria are available in the call for applications published each academic year on the university's website.

www.unipd.it/en/phd-programmes

ENROLLING IN LIFELONG LEARNING COURSES

Students with a *Bachelor* or a *Master* degree can enrol in lifelong learning courses, a series of courses with limited places, some of which are organised also together with other universities with the aim of expanding students' knowledge by entering the world of work through internships. To check requirements, students need to refer to the specific admission notice of the course they are interested in. The selection procedure is conducted as per the method and deadlines stated in the call for applications for each course, which is published annually on the university's website. Some courses offer a selection of units that may be taken individually.

www.unipd.it/en/short-specialization-degrees

GALILEAN SCHOOL OF HIGHER EDUCATION

Students can spend five years in a university of excellence following an educational path which includes a first-cycle degree and a second-cycle degree, seminars and additional courses taught by internationally-renowned lecturers, professors and tutors specialised in top quality training and guidance activities. It's the Galilean School of Higher Education, open to Italian and international students from all study courses at the University of Padova. This unique opportunity is given every year to thirty students, selected through a rigorous admission test at the end of which they are admitted to the first year in the School. Up to 5 international students can be admitted to the fourth year of studies in the School (first year of the second-cycle degree) following selection with public call for applications. Galilean students are enrolled in University of Padova courses under the condition their average mark is high.

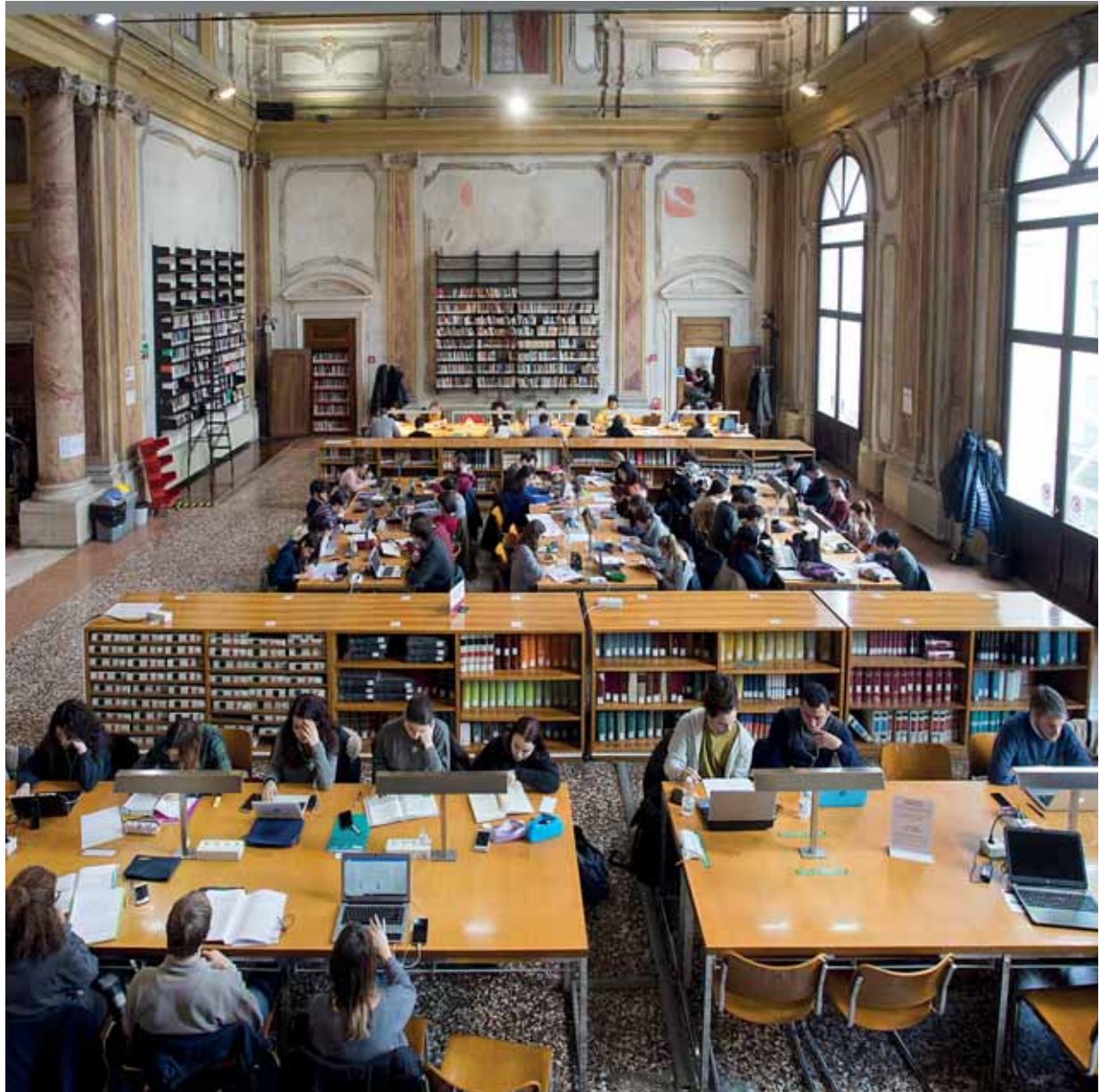
www.unipd-scuolagalileiana.it/en

MARCO POLO PROJECT

The Marco Polo project was set up to encourage Chinese students to enrol at an Italian university. One incentive is that they are granted a visa without having to be able to speak Italian. Students, however, will only be allowed to attend courses once they have passed an Italian language test (Common European Framework B1/B2 level). They also need to meet compulsory course requirements and to have passed an admission test, when envisaged.

A specific quota is envisaged for Marco Polo students.

www.unipd.it/en/marco-polo-project



FUNDING AND FEES

DEGREE COURSE FEES (FIRST-CYCLE DEGREE - SECOND-CYCLE DEGREE - SINGLE CYCLE DEGREE COURSE)

Payment of university fees gives students access to all services offered by the University of Padova. The maximum fee depends on the course, but it does not exceed 3,000 euros and it is divided into 3 instalments per year: www.unipd.it/en/tuition-fees
The amount due can also be reduced significantly. The following page summarizes all the possibilities students have to apply for a reduced fee:

www.unipd.it/en/fee-waivers

The University of Padova, the Veneto Region and other Institutions also offer a series of scholarships to support students: www.unipd.it/en/scholarships

Awards for specific categories of students, e.g. students with special sport or academic achievements, are also available. For further information, please go to:

www.unipd.it/en/awards

LIFELONG LEARNING COURSE FEES

To attend a post-graduate course, students need to pay a fee. The exact amount is specified in the call for applications of each course. Reductions are envisaged for students with disabilities and students from developing countries. The number of scholarships and awards is also specified in the calls for applications. To attend a course, students need to pay a fee which depends on the course; some Lifelong learning courses also offer specific economic benefits.

PHD FEES

To attend a PhD course, students need to pay a standard fee which is automatically deducted from their scholarship (if the candidate is granted one).

www.unipd.it/en/phd-fees-grants-benefits



INTERNATIONAL EXPERIENCES

Thanks to an extensive network of contacts and agreements with other universities all over the world, the University of Padova offers several international opportunities: every year hundreds of students take part in (incoming or outgoing) mobility programmes or attend international courses, thus having the opportunity to study new subjects, get to know different cultures and see what other educational systems are like.

ERASMUS+ FOR STUDIES AND SEMP

The University of Padova has been an active financial sponsor of the Erasmus+ for Studies Programme for the past 30 years providing mobility scholarships of various amounts, depending on the destination, and promoting the exchange of students in 1st cycle, 2nd cycle, single cycle and PhD degree courses. This programme enables students to spend 3 to 12 months abroad in one of the partner Universities in another European or non-European country and attend courses, take exams, prepare dissertations or carry out internships following a period of study. The University of Padova has also joined the *Swiss European Mobility Programme (SEMP)*, a mobility programme with Swiss universities financed by the Swiss government and similar to the Erasmus+ programme.

www.unipd.it/en/erasmus-studies-semp

BILATERAL AGREEMENTS

All University of Padova students have the opportunity to spend a semester or a full academic year at a partner university to study or carry out research. Any exams taken during this period are recognised in their university career. A partial refund of travelling expenses and/or board and lodging is normally included: the amount varies depending on the destination.

www.unipd.it/en/bilateral-agreements-students

JOINT PROGRAMMES

The University of Padova promotes initiatives to issue double or joint degrees and it provides special scholarships for students wishing to take part in such programmes, organized together with one or more partner institutions around the world.

At the end of their international education programme, students get a double degree which corresponds to the degree awarded by the universities partner in this project, or a joint degree which is awarded together by two or more partner institutions, as per the agreements in place with international institutions. Finally, students can do the *Erasmus Mundus Joint Master Degrees - EMJD*, a series of outstanding second-cycle degree courses jointly offered by at least three universities in three different European countries. Studying is done in at least two different countries and

INTERNATIONAL EXPERIENCES

at the end a double or joint degree is issued by the partner institutions.

www.unipd.it/en/joint-and-double-degree-programmes

www.unipd.it/en/international-joint-master-degrees

TOP INDUSTRIAL MANAGERS FOR EUROPE - TIME

This initiative gives engineering students the opportunity to attend a three-year integrated learning path, one year of which in Padova and two in prestigious partner universities: the *Grandes Écoles* in Paris, Nantes, Lille and Marseilles, the *Universitat Politècnica de Catalunya*, the *Universidade Tecnica de Lisboa* and the *Technical University of Denmark*. At the end of their studies, students receive a double degree from the University of Padova and the partner university.

www.time-association.org

SUMMER AND WINTER SCHOOLS

Top quality intensive courses are jointly organised by the University of Padova with other national and/or international academic institutions. One- to two-week courses are aimed at students who have at least a first cycle degree, PhD students, researchers, professionals and public or private sector employees. Activities are carried out in a different language from Italian and they include workshops, practical exercises, seminars, lab activities and guided tours.

www.unipd.it/en/summer-and-winter-schools

WORKING WHILE STUDYING

WORK OPPORTUNITIES

Students are free to work subject to national legislation. Work opportunities offered by the University of Padova are advertised in specific public call for applications.

www.unipd.it/en/part-time-job-opportunities

INTERNSHIPS AND APPRENTICESHIPS

The University of Padova promotes training periods in companies, public or professional bodies. They are aimed at currently enrolled students (curricular internship), recent university graduates who can apply within 12 months after earning their degree (extracurricular internship) and unemployed graduates (work placement/reintegration internship).

www.unipd.it/en/job-placement

ALUMNI

The Alumni association is a community which connects graduates of different ages, sectors and places where everyone has the same consideration and is granted free access.

Motivated by the founding values of the University, Alumni are bearers of the *Universa Universis Patavina Libertas* motto all over the world.

www.unipd.it/en/university-padova-alumni-association



UNIVERSITY LIFE

ACCOMMODATION

During their university career in Padova students can find accommodation:

- at ESU - Azienda regionale per il diritto allo studio universitario residences: a call for applications is published every year at the beginning of summer. Students can submit their application online, with different deadlines depending on whether they are enrolled in their first year of studies, the following years or specialisation schools and PhDs. Fees depend on income, merit, services offered and type of accommodation (www.esupd.gov.it/en)
- in private residences (hall of residences and dorms)
- in private flats, possibly shared with other people

www.unipd.it/en/housing

CANTEENS

Students enrolled in a study course, specialisation school and PhD can use canteens managed directly by ESU - Azienda regionale per il diritto allo studio universitario or partner organisations. Canteens are located in the city centre or near the main university departments.

www.unipd.it/en/canteens

SAOS DESK (INTERNATIONAL OFFICE)

Students who need help organising and following

the procedures necessary to stay in Italy (visa, residence permit, reuniting with their family, health assistance, etc.) can contact SAOS, a welcome desk of the International Office specifically set up for international students.

www.unipd.it/en/saos

BUDDY

International students who come to Padova to attend a whole study course or an exchange programme (e.g. Erasmus) are given their own Buddy, i.e. a senior university student who will welcome and support them during their stay.

GUIDANCE AND TUTORSHIP

The university offers a welcome desk to prospective students who intend to pursue their university studies in Padova where they can ask general questions about how university studies are organised, admission requirements and entry tests to study courses. The university also has tutors who provide students with learning support and help in finding all the necessary information on single study courses, in addition to helping them communicate with university teachers and university offices.

www.unipd.it/en/study-support

INCLUSION

Students with disabilities or Specific Learning Disabilities (SLD) have access to specific tools and services provided by the University to help them overcome barriers and be as independent as possible in their studies. Students with a disability can benefit from help with calculating fees and getting a scholarship, depending on the degree of the disability and the consequences it may have on their studies and any expenses incurred while attending courses.

www.unipd.it/en/students-special-needs

LANGUAGE COURSES

The University Language Centre promotes learning modern foreign languages taught at the University of Padova and Italian as a foreign language. It organizes courses, learning activities, self-learning initiatives, and language assessment of any type and at any level. It features a media library and its resources can be freely accessed by anyone.

www.cla.unipd.it/en

LIBRARIES AND STUDY ROOMS

Thanks to 29 libraries in the university library system, the University of Padova offers an extremely wide range of volumes, magazines, electronic scientific

journals, e-books, sector-specific databases, and other multimedia products. Students are free to use any university study hall and computer room, in addition to library reference rooms.

www.unipd.it/en/multimedia-facilities

SPORT AND CUS

Thanks to the CUS (University Sports Centre - Centro Universitario Sportivo), the University of Padova offers many possibilities to practice sport (e.g. athletics, five-a-side football, volleyball, basketball, boat races) both at competitive and amateur levels in two sports facilities in Padova. Every year students can take part in the *Ludi del Bo* (tournaments for university students and staff) and in the National University Championships. The University supports students with disabilities wanting to practice sport, especially Paralympic disciplines. The University of Padova also grants some benefits to athlete-students with specific competitive sport merits.

www.unipd.it/en/awards

STUDENT ASSOCIATIONS

The University of Padova features several social, cultural and sport associations involving the university community and the rest of the citizens of Padova.

www.unipd.it/en/associations

THE CITY OF PADOVA

Situated in the heart of north-eastern Italy, and less than 40 km from Venice, Padova is one of the most beautiful cities in Italy, offering over 3,000 years of history. This rich cultural heritage, appreciated every year by thousands of tourists, includes the Scrovegni Chapel - with its frescoes by Giotto, Prato della Valle - one of the biggest squares in Europe, the thirteenth-century Palazzo della Ragione - the world's largest hall without supporting columns, the oldest university Botanical Garden - a UNESCO World Heritage Site, and a historical city center, with beautiful squares, palaces and museums.

Thanks also to its close ties with the University, Padova is a lively and dynamic city offering throughout the year numerous events in the fields of art, music, theatre, cinema and sport.

In 2018 Padova was nominated Italy's official candidate for inclusion in the UNESCO World Heritage list for the 14th century cycle of frescoes "Padova Urbs Picta".

www.unipd.it/en/discovering-padova

210,440
RESIDENTS

20,716
BUSINESSES

861,128
ITALIAN

1,6 M
TOURISTS
EACH YEAR

740,064
INTERNATIONAL

162KM
CYCLING PATH

28
BIKE SHARING
STATIONS

16
CAR SHARING
STATIONS



OFFICE CONTACT DETAILS

CALL CENTRE

☎ 0039 049.8273131

✉ callcentre@unipd.it

Mon - Fri 9am - 5pm

CAREER SERVICE OFFICE

Palazzo Storione

Riviera Tito Livio 6

35123 Padova

☎ 0039 049.8273075

✉ stage@unipd.it

✉ placement@unipd.it

✉ stage.estero@unipd.it

Mon - Fri 10am - 2pm

Tue and Thu 3 - 5pm

Telephone office hours:

Mon - Fri 10am - 1pm

Tue and Thu 3 - 4.30pm

ESU - AZIENDA REGIONALE PER IL DIRITTO ALLO STUDIO UNIVERSITARIO

Via San Francesco 122

35121 Padova

☎ 0039 049.8235611

✉ esu@esu.pd.it

www.esupd.gov.it

SASSA SERVICE/ESU ACCOMMODATION

Via Tiepolo 48, 35129 Padova

☎ 0039 049.7927306

✉ sassa@esu.pd.it

INTERNATIONAL OFFICE

Palazzo Anselmi - Lungargine del

Piovego 1, 35131 Padova

☎ 0039 049.8271248

✉ international.office@unipd.it

Erasmus Desk: Palazzo Bo - Via VIII

Febbraio 2, 35122 Padova

☎ 0039 049.8273061

✉ erasmus@unipd.it

Mon - Wed - Fri 10am - 1pm

Tue 10am - 1pm and 3 - 4.30pm

Thu 10am - 3pm

PHD AND POST LAUREAM OFFICE PHD

Via del Risorgimento 9

35137 Padova

☎ 0039 049.8271929

✉ formazione.ricerca@unipd.it

Mon - Wed - Fri 10am - 1pm

Tue 10am - 1pm and 3 - 4.30pm

Thu 10am - 3pm

POST LAUREAM

Via U. Bassi 1, 35131 Padova

☎ 0039 049.8276373

✉ formazionecontinua.lauream@unipd.it

✉ titoliesteri.lauream@unipd.it

Telephone office hours:

Mon to Fri 10 - 12.30am

Mon - Wed - Fri 10am - 1pm

Tue 10am - 1pm and 3 - 4.30pm

Thu 10am - 3pm

PUBLIC RELATIONS OFFICE - URP

Palazzo Bo

Via VIII Febbraio 2, 35122 Padova

☎ 0039 049.8273338

✉ urp@unipd.it

Opening hours:

Mon - Fri 9 - 12.30am

SAOS DESK (INTERNATIONAL OFFICE)

Palazzo Bo

Via VIII febbraio, 2 35122 Padova,

☎ 0039 049.8273077

✉ saos@unipd.it

Mon and Wed 11.30am - 1pm

Tue 3 - 4.30pm
Thu 1.30 - 3pm
Mon and Wed 10am - 11.30am
(only by appointment)
Skype (saosdesk.unipd):
Tue 5 - 6pm

STUDENT CAREER OFFICE

AGRIPOLIS

(School of Agricultural Sciences
and Veterinary Medicine only)
Viale dell'Università 16
35020 Legnaro (PD)
☎ 0039 049.8272540
Mon - Fri 10 - 12.30am
Tue and Thu 3 - 4.30pm
Wed closed

CASA GRIMANI

Lungargine del Piovego 2/3
35131 Padova
☎ 0039 049.8273131
(call centre)
✉ carriere.studenti@unipd.it
Mon and Wed 10am - 1pm
Tue 10am - 1pm and 3 - 4.30pm
Thu 10am - 3pm
Fri 10am - 1pm (only by appointment)

STUDENT SERVICE OFFICE

ECONOMIC BENEFITS

Via del Portello 31, 35129 Padova
☎ 0039 049.8273131
(call centre)

✉ benefici.studenti@unipd.it

Mon and Wed 10am - 1pm
Tue 10am - 1pm and 3 - 4.30pm
Thu 10am - 3pm
Fri 10am - 1pm (only by appointment)

GUIDANCE AND TUTORING

Palazzo Storione
Riviera Tito Livio 6, 35123 Padova
☎ 0039 049.8273312
☎ 0039 049.8273131
(call centre)

✉ orienta@unipd.it

✉ tutorato@unipd.it

Mon and Wed 10am - 1pm
Tue 10am - 1pm and 3 - 4.30pm
Thu 10am - 3pm
Fri 10am - 1pm (only by appointment)

INCLUSION

Via del Portello 23, 35129 Padova
☎ 0039 049.8275038
✉ inclusione.studenti@unipd.it

✉ dislessia@unipd.it

Mon and Wed 10am - 1pm
Tue 10am - 1pm and 3 - 4.30pm
Thu 10am - 3pm
Fri 10am - 1pm (only by appointment)

UNIVERSITY LIBRARY SYSTEM

Via Anghinoni 3
35121 Padova
☎ 0039 049.8273661
✉ bibliotecadigitale.cab.unipd.it

UNIVERSITY OF PADOVA LANGUAGE CENTRE

Via Venezia 16
35131 Padova
☎ 0039 049.8276185
www.cla.unipd.it/en



SCHOOL OF AGRICULTURAL SCIENCES AND VETERINARY MEDICINE

Bachelor IT

L-25	Agricultural science and technology (Legnaro-PD)	L
L-38	Animal science and technology (Legnaro-PD)	L
L-26	Food science and technology (Legnaro-PD)	L
L-25	Forestry and environmental technology (Legnaro-PD)	L
L-21	Land and landscape restoration and enhancement (Legnaro-PD)	L
L-26 L-38	Safety and hygiene of food products (Vicenza)	L
L-26	Science and culture of gastronomy and catering (Vicenza)	L
L-25	Viticulture and enology science and technology (Conegliano-TV)	L

Bachelor EN

L-38	Animal care	L
------	-------------	---

Single-cycle degree IT

LM-42	Veterinary medicine	LN
-------	---------------------	----

Master IT

LM-69	Agricultural science and technology	R
LM-86	Animal science and technology	R
LM-9	Biotechnologies for food science	R
LM-70	Food science and technology	R
LM-73	Forestry and environmental science	R
LM-75	Land and environment science and technology	R

Master EN

LM-9	Biotechnologies for food science	R
LM-73	Forest science*	R
LM-70	Italian food and wine	R
LM-69	Sustainable agriculture*	R

L = limited places

R = admission requirements

LN = limited places on a national basis

* Double and/or joint degree available

LAW SCHOOL

Bachelor IT

L-14	Employment consultancy	C
------	------------------------	---

Single-cycle degree IT

LMG/01	Law* (Padova)	C
--------	---------------	---

LMG/01	Law (Treviso)	C
--------	---------------	---

SCHOOL OF ECONOMICS AND POLITICAL SCIENCE

Bachelor IT

L-14	Economic law (Rovigo)	C
------	-----------------------	---

L-18	Economics*	L
------	------------	---

L-36	Political science	C
------	-------------------	---

L-36	Political sciences, international relations, human rights	C
------	---	---

L-39	Social work (qualifying for welfare officers)	L
------	---	---

Master EN

LM-77	Business administration*	RT
-------	--------------------------	----

LM-56	Economics and finance*	RT
-------	------------------------	----

LM-77	Entrepreneurship and innovation	RT
-------	---------------------------------	----

LM-90	European and global studies*	R
-------	------------------------------	---

LM-52	Human rights and multi-level governance*	R
-------	--	---

Master IT

LM-63	Government sciences and public policies	R
-------	---	---

LM-87	Innovation and social work	R
-------	----------------------------	---

LM-52	International relations and diplomacy	R
-------	---------------------------------------	---

LM-77	Law and economics	RT
-------	-------------------	----

C = compulsory admission test

L = limited places

R = admission requirements

RT = admission requirements and test

* Double and/or joint degree available

SCHOOL OF ENGINEERING

Bachelor IT

L-9	Aerospace engineering	C
L-8	Biomedical engineering	L
L-9	Chemical and materials engineering	C
L-7	Civil engineering	C
L-8	Computer engineering	L
L-8	Electronic engineering	L
L-9	Energy engineering	C
L-9	Engineering and management (Vicenza)	C
L-7	Environmental and land planning engineering	C
L-8	Information engineering	L
L-9	Mechanical engineering	C
L-8	Mechatronic engineering (Vicenza)	C
L-9	Product innovation engineering (Vicenza)	C
L-23	Techniques and management of building and land	L

Single-cycle degree IT

LM-4	Building engineering and architecture c.u.	LN
------	--	----

Master EN

LM-35	Environmental engineering*	R
LM-27	ICT for internet and multimedia*	R
LM-44	Mathematical engineering	R

Master IT

LM-20	Aerospace engineering	R
LM-25	Automation engineering	R
LM-21	Bioengineering	R
LM-22	Chemical and process engineering	R
LM-26	Civil and industrial safety engineering	R
LM-23	Civil engineering*	R
LM-32	Computer engineering	R
LM-28	Electrical energy engineering	R
LM-29	Electronic engineering	R
LM-30	Energy engineering	R
LM-31	Engineering and management (Vicenza)	R
LM-53	Materials engineering	R
LM-33	Mechanical engineering	R
LM-25	Mechatronic engineering (Vicenza)	R
LM-33	Product innovation engineering (Vicenza)	R

C = compulsory admission test

L = limited places

R = admission requirements

LN = limited places on a national basis

* Double and/or joint degree available

SCHOOL OF HUMAN AND SOCIAL SCIENCES AND CULTURAL HERITAGE

Bachelor IT

L-1	Archaeology	C
L-20	Communication	L
L-15	Cultural tourism planning and management	C
L-19	Educational sciences (Padova)	L
L-19	Educational sciences (Rovigo)	L
L-42	History	C
L-1	History and conservation of the artistic and musical heritage	C
L-10	Humanities	C
L-11	Language, literature and cultural communication	C
L-12		
L-5	Philosophy	C
L-40	Sociological sciences	L
L-3	Visual and performing arts	C

Master EN

LM-81	Local development	R
LM-81	Sustainable territorial development* (intra University) (En/Fr)	R
LM-84	Techniques, heritage, industrial landscapes* (intra University) (En/Fr)	R

Single-cycle degree IT

LM-85	Primary teacher education	LN
Bis		

Master IT

LM-2	Archaeological sciences	R
LM-15	Classical languages and literatures and ancient history	R
LM-85	Cultures, education and global society	R
LM-88		
LM-37	European and american languages and literatures	R
LM-84	Historical sciences	R
LM-89	History of art	R
LM-39	Linguistics	R
LM-50	Management of educational services and life long education (Rovigo)	R
LM-57		
LM-38	Modern languages for international communication and cooperation	R
LM-14	Modern philology (intra University)*	R
LM-14	Modern philology	R
LM-78	Philosophical sciences*	R
LM-64	Religious studies (intra University)	R
LM-92	Strategies in communication	R
LM-65	Theatre, film, television and media studies	R

C = compulsory admission test

L = limited places

R = admission requirements

LN = limited places on a national basis

* Double and/or joint degree available

SCHOOL OF PSYCHOLOGY

Bachelor IT

L24	Cognitive psychology and psychobiology	L
L24	Developmental, personality and interpersonal relationships psychology	L
L24	Psychological sciences and techniques	L
L24	Social and work psychology	L

Bachelor EN

L24	Psychological science	L
-----	-----------------------	---

Master IT

LM-51	Applied cognitive psychology	L
LM-51	Clinical developmental psychology	L
LM-51	Clinical dynamic psychology	L
LM-51	Clinical psychology	L
LM-51	Developmental and educational psychology	L
LM-51	Neuroscience and neuropsychological rehabilitation	L
LM-51	Psychology of community, wellness promotion, and social change	L
LM-51	Social, work and communication psychology	L

Master EN

LM-51	Cognitive neuroscience and clinical neuropsychology	L
-------	---	---

SCHOOL OF SCIENCE

Bachelor IT

L-30	Astronomy	C
L-13	Biology	L
L-2	Biotechnology	L
L-27	Chemistry	L
L-31	Computer science	L
L-32	Environmental sciences and technology	L
L-34	Geological science	C
L-27	Industrial chemistry	L
L-27	Materials science	L
L-35	Mathematics	C
L-13	Molecular biology	L
L-32	Natural science	L
L-30	Optics and optometry	L
L-30	Physics	L
L-41	Statistics for economics and business	C
L-41	Statistics for technology and science	C

Master IT

LM-58	Astronomy	R
LM-54	Chemistry*	R
LM-18	Computer science	R
LM-6	Evolutionary biology	R
LM-74	Geology and technical geology	R
LM-8	Industrial biotechnology	R
LM-71	Industrial chemistry	R
LM-6	Marine biology (Chioggia-VE)	R
LM-53	Materials science*	R
LM-40	Mathematics*	R
LM-60	Natural science	R
LM-6	Sanitary biology	L
LM-82	Statistical sciences	R

Master EN

LM-91	Data science	L
LM-6	Molecular biology*	L
LM-17	Physics*	R
LM-17	Physics of data	L

C = compulsory admission test

L = limited places

R = admission requirements

* Double and/or joint degree available

PHD COURSES

Hard Sciences IT

Statistical science

Hard Sciences EN

Astronomy

Earth sciences

Fusion science and engineering*

Industrial engineering

Information engineering

Management engineering and real estate

Economics

Mathematical sciences

Mechatronics and product innovation engineering

Molecular sciences

Physics

Science & engineering of materials and nanostructures

Sciences of civil, environmental and architectural engineering

Space sciences, technologies and measurements

Humanities IT

Historical, geographical, anthropological studies

History, criticism and preservation of cultural heritage

International law and private and labour law

Law

Linguistic, philological and literary sciences

Pedagogical, educational and instructional sciences

Philosophy

Humanities EN

Economics and management

Human rights, society, and multi-level governance*

Life Sciences EN

Animal and food science

Biosciences

Crop science

Psychological sciences

* International joint doctorate Programme

Medical and Biomedical Sciences IT

Clinical and experimental oncology and immunology

Clinical and experimental sciences

Developmental medicine and health planning sciences

Pharmacological sciences

Translational specialistic medicine

“G.B. Morgagni”

Veterinary sciences

Medical and Biomedical Sciences EN

Arterial hypertension and vascular biology (ARHYVAB)*

Biomedical sciences

Molecular medicine

Neuroscience

Interdisciplinary IT

Social sciences: interactions, communication, cultural constructions

Interdisciplinary EN

Brain, mind and computer science

Land, environment, resources, health

* International joint doctorate Programme

EDITING

International Office
University of Padova

GRAPHIC DESIGN

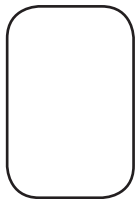
Communication Office
University of Padova

TRANSLATION

Language Centre
University of Padova

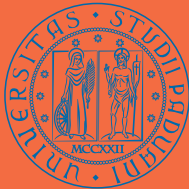
© 2018 Università degli Studi di Padova
Content updated as May 2018

Printed in May 2018 at
Grafiche Nuova Jolly (Padova)



Inside pages printed on Crush Mais, eco-friendly paper made by Favini
from agro-industrial by-products and residues, using 100% green energy

UNIVERSA UNIVERSIS PATAVINA LIBERTAS



UNIVERSITÀ
DEGLI STUDI
DI PADOVA

WWW.UNIPD.IT