

# STUDY WITH US

UNIVERSITY OF PADUA

FOUNDED IN  
**1222**

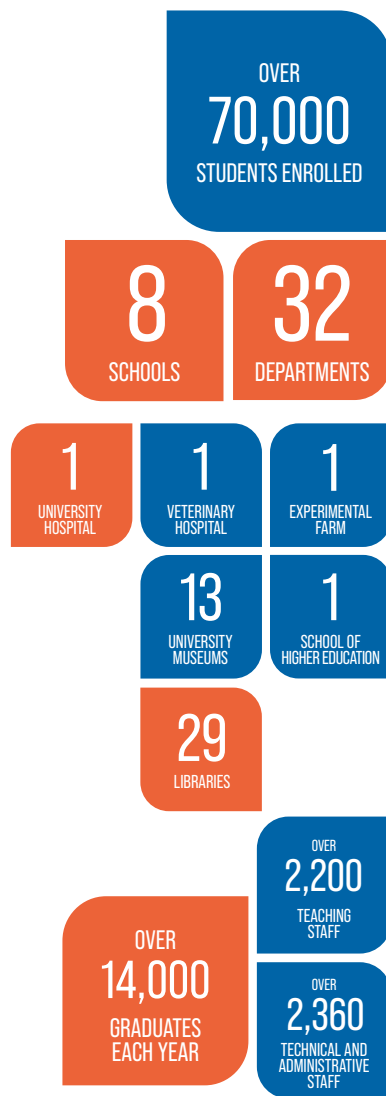
# THE UNIVERSITY

The University of Padua is a world-leading research-intensive university that has been driving global change since its foundation in 1222. Loyal to its motto **Universa Universis Patavina Libertas** (Paduan freedom is universal for everyone), it has always been a bastion of free thought, study and research.

During eight centuries, students, researchers, and alumni have provided key contributions to the advancement of knowledge, science and society: **Nicolaus Copernicus** and **Galileo Galilei** are among the fathers of modern science, **Andreas Vesalius** and **William Harvey** founded modern medicine and **Elena Lucrezia Cornaro Piscopia** became the world's first woman to graduate in 1678.

The University of Padua is today a multidisciplinary institution with 8 Schools and 32 Departments offering a broad and comprehensive portfolio of programmes, ranging from Engineering to Business and Political Sciences, from Medicine to Humanities, from Psychology to Agriculture, from Law to Science.

The 4 Departments of the School of Agricultural Sciences and Veterinary Medicine are located in the Agripolis campus, less than 10km from Padua city centre. Other research and teaching facilities are situated in various towns of the Veneto



## THE UNIVERSITY

region, such as Vicenza, Treviso, Rovigo, and Chioggia. Students benefit from a **world-class educational institution** and enjoy an exciting student life in Padua, where they build long-lasting relationships and grow personally, academically, and professionally. Graduates are **global citizens** that succeed in all professional fields and bring their expertise and dedication to excellence into the world. A degree from the University of Padua is recognised as a prestigious achievement in the labour market worldwide. The University is also the scientific and cultural heart of Italy's industrious North-East, providing highly specialised training for the area's 5-million-plus residents and its 400,000-plus companies, a role made possible by its extensive network of campuses located across the Veneto region.





PADUA

# 10 REASONS FOR STUDYING IN PADUA

## A BROAD RANGE OF MULTIDISCIPLINARY COURSES

Padua offers a broad and comprehensive portfolio of programmes; interconnections among the different disciplines generate a vibrant and stimulating learning environment.

## SUPERIOR EDUCATION

The University of Padua is a **TOP 250** university in the world. It is also recognised as the best university in Italy for teaching quality (based on the 2018 evaluation of ANVUR, the Agency of the Italian Ministry of University and Research in charge of assessing university performance). It provides a solid academic background and excellent training, ensuring graduates can brilliantly succeed in their professions.

## A LEADING INTERNATIONAL UNIVERSITY FOR RESEARCH

The University of Padua is one of the most cited universities in the world. Academic staff develop ground-breaking research tackling global challenges and supporting the advancement of knowledge, science, and society. The University is recognised as the **best university in Italy for research quality** (ANVUR 2018).

## SERVICE QUALITY

90% of students are highly satisfied with their academic career and student experience at the University of Padua (National Graduate Survey, Almalaurea 2022).

## ONE OF EUROPE'S OLDEST AND MOST RENOWNED UNIVERSITIES

It was founded in 1222 by students and lecturers in a bid to spread freedom of thought within study and teaching. Since then, students, researchers, and alumni have deeply contributed to the improvement of knowledge, science, and society.

## AN INTERNATIONAL COMMUNITY

A large and vibrant international community of staff, students and alumni supports the University's mission at global level. The University participates in leading international networks, and its research and teaching projects involve lecturers from all over the world. Students can benefit from **internationalised curricula and numerous study abroad opportunities**.

# RANKINGS

## FINANCIAL INCENTIVES

Tuition fees are extremely competitive when compared with those of other top-ranked universities. The University of Padua grants an array of merit-based scholarships for excellent candidates.

## A STUDENT-CENTRED TOWN

The University affords a unique learning environment and is intertwined with the city and its layout. Its research centres, Departments and Schools are located all across town, and its students account for over 30% of the local population.

## A UNIQUE SETTING

Padua is a welcoming and charming city, ensuring one of the finest experiences of Italian arts, culture and lifestyle. It combines history, culture, and art with thriving businesses in every sector.

## STRATEGIC POSITION

Efficient air, rail, and road transportation links with Italy's major cities and international destinations.



**RANKING 236**  
QS Ranking 2025



**EMPLOYABILITY RANKING 161-170**  
QS Ranking 2022



**RANKING 201-300**  
ARWU - Shanghai Ranking 2024



**RANKING 201-250**  
Times Higher Education 2025

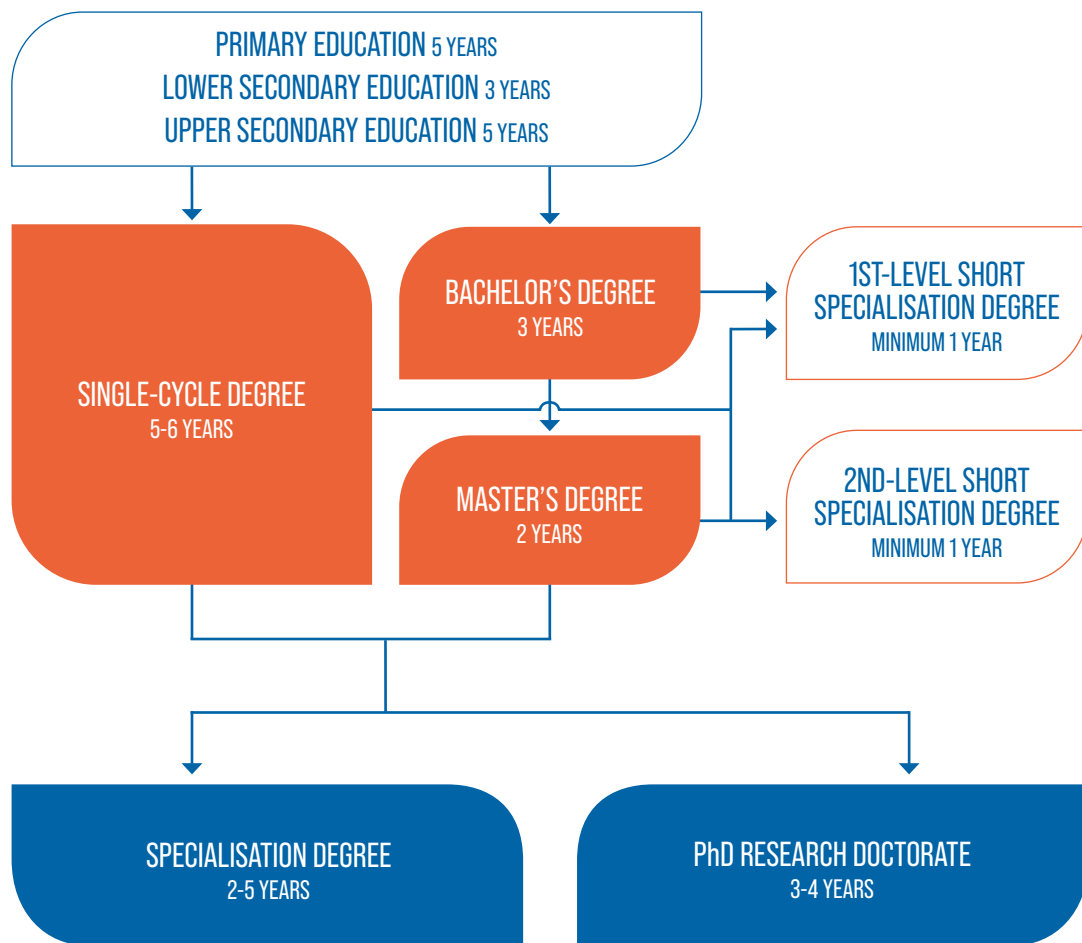


**RANKING 101-200**  
University Impact Rankings 2024



**RANKED A** (Highest score)  
by the Committee of Evaluation Expert  
of ANVUR (Italian National Agency of the  
Evaluation of Universities and Research  
Institutes) - 2019

# THE ITALIAN EDUCATION SYSTEM





## **BACHELOR'S DEGREE** **LAUREA**

Provides a solid background in general methods and content, as well as in specific professional skills.

**Admission requirements:** at least 12 years of prior education

**Leads to:** Master's degree; 1st-level short specialisation degree

**Duration:** 3 years - 180 ECTS\*

## **SINGLE-CYCLE DEGREE** **LAUREA MAGISTRALE** **A CICLO UNICO**

Ensures advanced training for regulated professions (e.g. medical doctor, veterinarian, pharmacist) and activities requiring a high level of specialisation.

**Programmes:** Medicine and Surgery; Dentistry; Veterinary Medicine; Pharmacy; Chemistry and Pharmaceutical Techniques; Law; Building Engineering and Architecture; Primary Teacher Education

**Admission requirements:** at least 12 years of prior education

**Leads to:** PhD; specialisation degree; 1st-level and 2nd-level short specialisation degrees

**Duration:** 5 to 6 years - 300 to 360 ECTS\*

## **MASTER'S DEGREE** **LAUREA MAGISTRALE**

Provides advanced training for highly specialised professions in specific fields.

**Admission requirements:**

Bachelor's degree

**Leads to:** PhD; specialisation degree; 1st-level and 2nd-level short specialisation degrees

**Duration:** 2 years - 120 ECTS\*

## **SHORT SPECIALISATION DEGREE**

Builds on previously acquired knowledge to strengthen specific professional skills.

**Admission requirements:**

Bachelor's degree or Master's degree (for 1st-level short specialisation degree); Master's degree (for 2nd-level short specialisation degree)

**Duration:** at least 1 year - 60 ECTS\*

## **SPECIALISATION DEGREE** **DIPLOMA DI SPECIALIZZAZIONE**

Improves knowledge and skills for highly specialised professions, such as Medicine, Psychology, Law, and Veterinary.

**Admission requirements:** Master's degree; Single-cycle degree

**Duration:** a maximum of 5 years

## **PhD RESEARCH DOCTORATE** **DOTTORATO DI RICERCA**

Aims to teach students the correct method for advanced scientific research at universities and public or private businesses. Alternatively, it guarantees a high level of professional skills.

**Admission requirements:** Master's degree; Single-cycle degree

**Duration:** 3 to 4 years

\* European Credit Transfer System



# ENROLLING AT THE UNIVERSITY OF PADUA

International students who wish to pursue their education in Italy are always welcome at the University of Padua.

The academic year starts on 1st October and ends on 30th September of the following year.

## ENROLLING IN BACHELOR'S, MASTER'S AND SINGLE-CYCLE DEGREE PROGRAMMES

International students can submit their application on [apply.unipd.it](https://apply.unipd.it), a user-friendly platform where they should upload all the necessary documents and have their educational background checked by the Academic Committee.

Admission procedures may include a compulsory entry test, to be sat online (e.g.: TOLC) or in Padua.

The number of places available for each programme can be either limited (by the University itself, or on a national basis by the Italian Ministry of University and Research, e.g. the Single-cycle degree in Medicine and Surgery) or unlimited.

The application timeline varies according to the type of programme and may include one or more application periods, starting from November each year.

[www.unipd.it/en/how-apply](https://www.unipd.it/en/how-apply)

Classes begin between the end of September and the first weeks of October and are organised either in semesters or in trimesters, according to the programme. Information on timetables is available at:

[www.gestionedidattica.unipd.it/PortaleStudenti](https://www.gestionedidattica.unipd.it/PortaleStudenti)

## ENROLLING IN SINGLE COURSE UNITS

The University of Padua gives the opportunity to attend up to 5 individual course units per academic year and to sit the respective examinations without being enrolled in the complete programme. Anyone can apply to single course units, even if already enrolled at a public or a private university in Italy (except for the University of Padua) or abroad. A fee is charged for enrolment in each unit. Enrolment in single course units is not available for all programmes.

[www.unipd.it/en/single-course-units](https://www.unipd.it/en/single-course-units)



[apply.unipd.it](https://apply.unipd.it)

## ENROLLING AT THE UNIVERSITY OF PADUA

### ENROLLING IN A PhD

The University of Padua strongly prioritises third-level education and has been expanding its support for research training in order to ensure the highest standards. Complete descriptions of research fields, methods, and selection criteria are available in the Call for admission published each academic year (usually in spring) on the University's website.

[www.unipd.it/en/phd-programmes](http://www.unipd.it/en/phd-programmes)

### ENROLLING IN SHORT SPECIALISATION DEGREES

Postgraduate students can enrol in short specialisation degrees, a series of courses with limited places focusing on specific subjects. To check admission requirements, deadlines, and available scholarships, students need to refer to the Call for admission of the course they are interested in, which is published annually on the University's website.

[www.unipd.it/en/short-specialisation-degrees](http://www.unipd.it/en/short-specialisation-degrees)

### GALILEAN SCHOOL OF HIGHER EDUCATION

The Galilean School of Higher Education is a unique opportunity to become part of a community, whose members are accommodated free-of-charge in a dedicated college, enjoying a series of opportunities and sharing their learning experience. This top-level educational path includes a Bachelor's or Master's degree at the University of Padua, seminars and

additional courses taught by internationally-renowned lecturers, professors and tutors, and individual guidance activities. Every year the School selects the best 30 students of any nationality for the first year (8 for Humanities, 8 for Social Sciences, and 14 for Natural Sciences) through a rigorous entry test. Moreover, up to 4 international students can be admitted to the first year of a Master's degree following selection with public Call for admission.

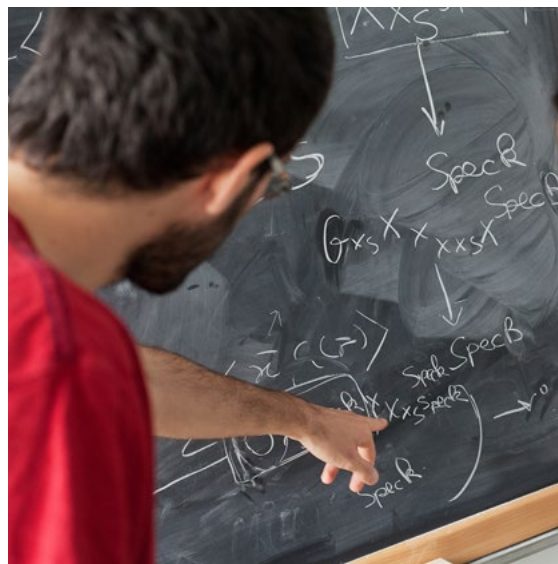
[www.unipd-scuolagalileiana.it/en](http://www.unipd-scuolagalileiana.it/en)

### MARCO POLO PROJECT

The Marco Polo project was set up to encourage Chinese students to acquire a proficiency level (B1/B2 of the Common European Framework) in the Italian language through intensive courses in Italy, held from November to August.

Marco Polo candidates can then enrol in a study programme at the University of Padua following the standard admission procedures, without applying for a new visa.

[www.unipd.it/en/marco-polo-project](http://www.unipd.it/en/marco-polo-project)





# FUNDING AND FEES

## DEGREE PROGRAMME FEES (BACHELOR'S, MASTER'S, SINGLE CYCLE DEGREES)

Payment of university fees gives students access to all services provided by the University of Padua. The maximum fee depends on the programme, but it does not exceed 3,000 euros per year and it is divided into 3 instalments.

[www.unipd.it/en/tuition-fees](http://www.unipd.it/en/tuition-fees)

## EU/EEA STUDENTS

EU students and students coming from the European Economic Area can have their tuition fees significantly reduced based on the student's financial standing, which is assessed by the University of Padua's partner Fiscal Assistance Centre. This service is offered free of charge and is also useful to access other benefits and funding opportunities.

## SCHOLARSHIPS AND AWARDS

The University of Padua and other public or private institutions award a series of fee-waivers and scholarships to support students. Among others, the **Padua International Excellence Scholarship** is the perfect opportunity reserved to highly talented prospective international students wishing to pursue a Bachelor's or Master's degree completely held in English.

[www.unipd.it/en/scholarships-international-students](http://www.unipd.it/en/scholarships-international-students)

[www.unipd.it/en/fee-waivers](http://www.unipd.it/en/fee-waivers)

Awards for specific categories (e.g. students with special sport or academic achievements) are available as well.

[www.unipd.it/en/awards](http://www.unipd.it/en/awards)

## SHORT SPECIALISATION DEGREE COURSE FEES

The Call for admissions specifies the fee and the number of scholarships and awards for each course. Reductions are granted for students with disabilities and students from developing countries.

## PhD FEES

To attend a PhD programme, students need to pay a standard fee which is automatically deducted from their scholarship (if the candidate is granted one).



# A UNIQUE STUDENT EXPERIENCE

## GLOBAL ENGAGEMENT OFFICE

The Global Engagement Office provides international students with information on the educational offer, funding opportunities, and other services granted by the University. It supports students in the pre-enrolment and enrolment stages, including the verification of entry requirements and the evaluation of foreign qualifications. The team also welcome international students upon their arrival and promote welcome initiatives.

[www.unipd.it/en/international-relations](http://www.unipd.it/en/international-relations)

## SAOS (Servizio Accoglienza Ospiti Stranieri)

The SAOS office is dedicated to international students who need assistance on immigration-related procedures (e.g. visa, residence permit, health insurance)

[www.unipd.it/en/saos](http://www.unipd.it/en/saos)

## BUDDY

International students enrolling in a degree programme or spending a mobility period (e.g. Erasmus) in Padua are assigned a Buddy, i.e. a senior university student who will welcome and support them during their stay.

[www.unipd.it/en/buddy](http://www.unipd.it/en/buddy)

## CANTEENS

All students and staff can use the canteens managed by ESU or other partners. Canteens are located in the city centre or near the main University facilities.

[www.unipd.it/en/canteens](http://www.unipd.it/en/canteens)

## GUIDANCE AND TUTORING

The Study Advice service helps prospective students to find the right academic path by discussing their cultural background, interests, aptitude and professional ambitions. The Tutoring service supports enrolled students throughout their university career. Tutors help them to manage their study time, deal with examination planning, support the preparation and share learning experiences.

[www.unipd.it/en/study-support](http://www.unipd.it/en/study-support)

## HOUSING

During their university career in Padua, students can find accommodation:

- at **ESU residences**: fees depend on income, merit and type of accommodation. An online Call for applications is published every year at the beginning of the summer.

[www.esu.pd.it/en](http://www.esu.pd.it/en)

- in **private halls of residence**: different prices and conditions apply based on supplied services (e.g. half/full board). Some private residences reserve places for international students.
- in **private flats**, possibly shared with other people. Our Housing Office supports international students in searching suitable accommodation in the private market and dealing with related paperwork.

[www.unipd.it/en/housing](http://www.unipd.it/en/housing)



## INCLUSION

Students with disabilities or Specific Learning Disabilities (SLD) have access to specific tools and services provided by the University of Padua in order to overcome barriers and be as independent as possible in their studies. Students with disabilities can also benefit from special scholarships and fee-waivers, based on family income, merit, and disability level.

[www.unipd.it/en/students-special-needs](http://www.unipd.it/en/students-special-needs)

## LANGUAGE COURSES

The CLA (Centro Linguistico di Ateneo - University Language Centre) promotes the learning of modern foreign languages and of Italian as a foreign language. It organises courses and learning activities, encourages self-learning initiatives, and carries out language assessments of any type and at any level. It features a media library, whose resources are accessible for free by all students and staff.

[www.cla.unipd.it/en](http://www.cla.unipd.it/en)

## LIBRARIES AND STUDY ROOMS

Thanks to 29 libraries belonging to the University Library System, the University of Padua offers an extremely wide range of volumes, magazines, electronic scientific journals, e-books, sector-specific databases, and other multimedia products. Students are free to use any University study and computer rooms, in addition to library reference rooms.

[www.unipd.it/en/multimedia-facilities](http://www.unipd.it/en/multimedia-facilities)

## MEDIA

The University of Padua has a multimedia platform, il Bo Live, a daily newspaper and virtual notice board. The university radio station RadioBue.it is fully integrated into the platform.

[ilbolive.unipd.it](http://ilbolive.unipd.it)

## MUSEUMS

The University Museum Centre coordinates and promotes the activities of its 13 museums and 10 collections, an extremely diverse patrimony of scientific, artistic and historical artefacts, items and documents collected over more than eight hundred years to support research and teaching activities.

[www.musei.unipd.it/en](http://www.musei.unipd.it/en)

## HEALTHCARE AND PSYCHOLOGICAL SUPPORT

International students can benefit from the National Health Service, just like any Italian citizen (conditions apply). The Psychological Assistance Service is a point of reference for any students who encounter psychological difficulties during their studies (e.g. anxiety, relationship problems, academic performance). It provides counselling and valuable information and support regarding addictions (e.g. smoking, alcohol, drugs, eating disorders). The service is completely free of charge for all students of the University of Padua.

[www.unipd.it/en/healthcare](http://www.unipd.it/en/healthcare)

## A UNIQUE STUDENT EXPERIENCE

### SPORT

Thanks to the CUS (Centro Universitario Sportivo - University Sports Centre), the University of Padua offers many possibilities to practice sport (e.g. athletics, rugby, volleyball, basketball, boat races) both at competitive and amateur levels in two sports facilities located in Padua. Every year students can take part in the Ludi del Bo (tournaments for university students and staff) and in the National University Championships. The University supports students with disabilities willing to practice sport, especially Paralympic disciplines. The University of Padua also grants some financial benefits to athlete-students with specific competitive sport merits.

[www.unipd.it/en/sport-leisure](http://www.unipd.it/en/sport-leisure)

[www.unipd.it/en/awards](http://www.unipd.it/en/awards)

### STUDENT ASSOCIATIONS

The University of Padua features several social, cultural and sport associations involving the university community and the citizens of Padua.

*The International Student Council* is the association representing international students at the University of Padua, providing support and promoting social interaction and cultural exchanges.

*The Erasmus Student Network (ESN)* is a non-profit international student organisation that provides opportunities for cultural understanding and self-development under the principle of "Students Helping Students".

*The Concentus Musicus Patavinus* is the centre for musical activities and live performances of the University, including various groups such as orchestra (classical), large choir, chamber choir, jazz band and contemporary dance.

Students and staff participate in many theatre companies, which promote acting courses, workshops and shows, even with a multilingual twist.

[www.unipd.it/en/associations](http://www.unipd.it/en/associations)



# INTERNATIONAL EXPERIENCES

The University of Padua provides all students with global perspectives during their studies. The **international dimension** of the University is corroborated both by the growing number of programmes completely held in English and by an increasing range of initiatives. Students develop an international and intercultural approach thanks to an integrated teaching method that promotes a global vision on the key elements debated during class. This modern perspective is ensured by a significant presence of international visiting scientists and professors from outstanding universities and research institutes. Becoming a student of the University of Padua means accessing an open and vibrant community, made of local and international students, as well as internationally mobile incoming students with many different cultural and educational backgrounds. The participation of the University in several international networks, such as the *Arqus European University Alliance*, *Venice International University*, the *Coimbra Group*, *UNIMED* and *Uniadrión*, further enhances the array of international experiences students can benefit from. Exchange programmes, virtual and blended mobility, language trainings and an active involvement in the Alliance activities are some of the opportunities available to students.

[www.unipd.it/en/english-degrees](http://www.unipd.it/en/english-degrees)

[www.arqus-alliance.eu](http://www.arqus-alliance.eu)

## JOINT AND DOUBLE DEGREE PROGRAMMES

The University of Padua offers a wide range of international joint and double degree programmes in cooperation with key partners worldwide.

The programmes are based on complementary courses at partner universities, offering students their leading expertise.

Students enrolling in such programmes spend one or more semesters at a partner university and acquire either a single qualification jointly released by both academic institutions (**joint degree**) or two degree titles, released by the involved institutions (**double degree**). Among others, *Erasmus Mundus Joint Master Degrees* are an example of joint programmes, where students are required to attend modules in at least two Higher Education Institutions in two different countries. At the end of the programme, successful students will be awarded a double, multiple or joint degree. Engineering students also have the chance to participate in one of the double degree programmes offered in the framework of the prestigious *Top International Managers in Engineering* (TIME) Association.

[www.unipd.it/en/joint-and-double-degree-programmes](http://www.unipd.it/en/joint-and-double-degree-programmes)

[www.unipd.it/en/international-joint-master-degrees](http://www.unipd.it/en/international-joint-master-degrees)





## INTERNATIONAL EXPERIENCES

### INTERNATIONAL MOBILITY

For over 30 years, the University of Padua has strongly encouraged student mobility as a unique experience. Whether they choose to spend a **study period abroad**, carry out **international research projects** or **internships** at a partner university, students both improve their intercultural and language skills, and acquire new and valuable competences in a different academic context.

Thanks to several bilateral agreements with other universities in Europe and all over the world, every year thousands of students take part in mobility programmes or attend international courses, thus having the chance to study new subjects, get to know different cultures and benefit from other educational approaches.

The University of Padua is also a significant player in the **Erasmus+ Programme**, which enables students to spend a long-term period abroad at partner universities or to take part in *Blended Intensive Programmes* combining a significant virtual component with a short physical mobility.

It is also part of the *Swiss European Mobility Programme* (SEMP), which allows students to spend a study period at a partner university in Switzerland. Furthermore, the University of Padua has developed its own overseas programme, *Ulisse*, which offers

students the opportunity to study/research at partner universities outside the EU.

[www.unipd.it/en/erasmus-studies-out](http://www.unipd.it/en/erasmus-studies-out)

[www.unipd.it/en/ulisse](http://www.unipd.it/en/ulisse)

[www.unipd.it/en/erasmus-traineeship-mobility](http://www.unipd.it/en/erasmus-traineeship-mobility)

### VIRTUAL EXCHANGE

The University of Padua has several active *Virtual Exchange* programmes. Jointly organised between at least two international universities, *Virtual Exchange* is an accessible, ground-breaking international experience, leveraging on new technologies and a common lingua franca, without entailing physical mobility. Based on a student-centred and learner-led collaborative experience, it aims at developing a common project and/or discussing interdisciplinary topics with a challenged-based approach.

[www.unipd.it/en/virtual-exchange-students](http://www.unipd.it/en/virtual-exchange-students)

### SUMMER AND WINTER SCHOOLS

Top quality short-term intensive courses are jointly organised by the University of Padua and other national and/or international institutions.

Activities are usually carried out in English and include workshops, seminars, lab activities, field trips and guided tours, all held in an international environment.

[www.unipd.it/en/summer-schools](http://www.unipd.it/en/summer-schools)

# WORKING WHILE STUDYING

## WORK OPPORTUNITIES

In accordance with the Italian law, EU students are free to work during their studies. Non-EU students with a valid residence permit are allowed to work up to 20 hours/week. The University of Padua offers some part-time jobs, which are advertised in specific public Calls for applications.

[www.unipd.it/en/part-time-job-opportunities](http://www.unipd.it/en/part-time-job-opportunities)

## INTERNSHIPS AND APPRENTICESHIPS

Through its Career Service Office, the University of Padua promotes training periods in companies, public or professional bodies. They are addressed to currently enrolled students (curricular internship), recent university graduates, who can apply within 12 months after earning their degree (extracurricular internship), and unemployed graduates (work placement/reintegration internship).

[www.unipd.it/en/job-placement](http://www.unipd.it/en/job-placement)

# ALUMNI

The Alumni Association is a community which connects graduates of all ages, sectors, and places. The community grants free access and equal consideration to all graduates. Motivated by the founding values of the University, alumni bear the *Universa Universis Patavina Libertas* motto all over the world.

[www.unipd.it/en/alumni](http://www.unipd.it/en/alumni)

# THE CITY OF PADUA

Right in the heart of north-eastern Italy, and less than 40 km from Venice, Padua is one of the most beautiful cities in Italy, with over 3,000 years of history.

This rich cultural heritage, appreciated every year by thousands of tourists, includes the Scrovegni Chapel with its frescoes painted by Giotto - **UNESCO World Heritage Sites**, Prato della Valle - one of the biggest squares in Europe, the thirteenth century Palazzo della Ragione - the world's largest hall without supporting columns, the world's oldest university Botanical Garden - a UNESCO World Heritage Site, and a historical city centre, with picturesque squares, palaces and museums.

Padua offers an extended cycling path network, multiple bike sharing and electric scooter options with special discounts for students.

Also thanks to its close ties with the University, Padua is a lively and dynamic city offering numerous events in the fields of art, music, theatre, cinema, and sport throughout the year.

[www.unipd.it/en/discovering-padua](http://www.unipd.it/en/discovering-padua)

OVER  
**210,000**  
RESIDENTS

OVER  
**25,000**  
BUSINESSES

OVER  
**900,000**  
ITALIAN

OVER  
**1,6 M**  
TOURISTS  
EACH YEAR

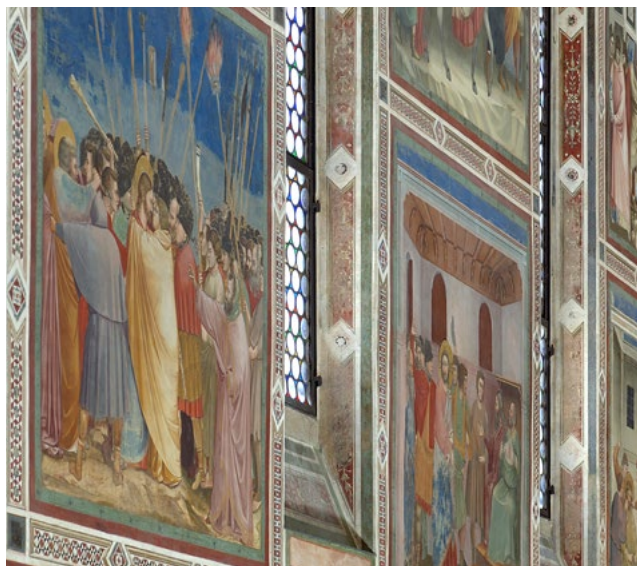
OVER  
**740,000**  
INTERNATIONAL

**200KM**  
CYCLING PATH

**30**  
BIKE SHARING  
STATIONS

**700**  
STATION-LESS  
SHARED BIKES







# AGRICULTURAL SCIENCES AND VETERINARY MEDICINE

## Bachelor's degrees (3 years)

Agricultural science and technology

Animal science and technology

Food science and technology

Forestry and environmental technology

Land and landscape restoration and enhancement

Organic crops management

Safety and hygiene of food products

Science and culture of gastronomy

Veterinary technical assistance sciences

Viticulture and enology science and technology

## Bachelor's degrees (3 years)

Animal care

## Master's degrees (2 years)

Agricultural science and technology

Animal science and technology

Biotechnologies for food science

Food science and technology

Forestry and environmental science

Land and environment science and technology

## Single-cycle degree (5 years)

Veterinary medicine

## Master's degrees (2 years)

Biotechnologies for food science

Forest sciences\*

Food and health

Italian food and wine\*

Sustainable agriculture\*

GLOFOR - Global Forestry\*\*

PLANTHEALTH - Plant health in sustainable cropping systems\*\*

MEDFOR - Mediterranean forestry and natural resources management\*\*

SUFONAMA - Sustainable forest and nature management\*\*

\* Double and/or joint degree available

\*\* Erasmus Mundus Joint Master Degree

■ Italian-taught  
■ English-taught

# LAW

## Bachelor's degrees (3 years)

Employment consultancy

Law and technology

Third sector legal advisor

## Single-cycle degree (5 years)

Law\*

# ECONOMICS AND POLITICAL SCIENCE

## Bachelor's degrees (3 years)

Economic law

Economics\*

Political science

Political sciences, international relations, human rights

Social work

## Master's degrees (2 years)

Government sciences and public policies

Innovation and social work

International relations and diplomacy

## Master's degrees (2 years)

Accounting, finance and business consulting

Applied economics

European and global studies

Human rights and multi-level governance\*

Management for sustainable firms

\* Double and/or joint degree available

■ Italian-taught  
■ English-taught



# ENGINEERING

## Bachelor's degrees (3 years)

Aerospace engineering

Automation and systems engineering

Biomedical engineering

Chemical and materials engineering

Civil engineering

Computer engineering

Digital technologies for building and land

Electronic engineering

Energy engineering

Engineering and management

Environmental and land planning engineering

Internet and multimedia engineering

Mechanical engineering

Mechatronics engineering

Product innovation engineering

## Bachelor's degrees (3 years)

Information engineering

## Single-cycle degree (5 years)

Building engineering and architecture

## Master's degrees (2 years)

Bioengineering

Civil and industrial safety engineering

Civil engineering\*

Electrical energy engineering

Engineering and management

Mechanical engineering

## Master's degrees (2 years)

Aerospace engineering

Chemical and process engineering

Computer engineering

Control systems engineering

Electrical engineering

Electronic engineering

Energy engineering

Food industry engineering

Management engineering

Environmental engineering\*

ICT for internet and multimedia\*

Mechatronics engineering (to be approved)

Mechanical innovation for product engineering (to be approved)

Materials engineering

Mathematical engineering

Water and geological risk engineering

A.M.A.S.E.-Advanced Material Sciences and Engineering\*\*

SteDe-Sustainable territorial development (intra University)(En/Fr)\*\*

\* Double and/or joint degree available

\*\* Erasmus Mundus Joint Master Degree

■ Italian-taught

■ English-taught

# HUMAN AND SOCIAL SCIENCES AND CULTURAL HERITAGE

## Bachelor's degrees (3 years)

Archaeology

Communication

Cultural tourism planning and management

Educational sciences

History

History and conservation of the artistic and musical heritage

Humanities

Language, literature and cultural communication

Philosophy

Sociological sciences

Visual and performing arts

## Bachelor's degrees (3 years)

Italian medieval and renaissance studies

## Single-cycle degree (5 years)

Primary teacher education

## Master's degrees (2 years)

Applied sciences to cultural heritage, materials and sites

Communication strategies

English studies

Local development

Mobility studies

Social sciences and digital data (to be approved)

TPTI - Techniques, heritage, industrial landscapes (intra University) (En/Fr)\*\*

## Master's degrees (2 years)

Archaeological sciences

Classical languages and literatures and ancient history

Cultural pluralism, social change and migrations

European and american languages and literatures

Historical sciences

History of art

Landscape studies

Linguistics

Management of educational services and life long education

Modern languages for international communication and cooperation

Modern philology\*

Pedagogy

Philosophical sciences\*

Religious studies (intra University)

Strategies in communication

Theatre, film, television and media studies

Tourism, cultural heritage, sustainability

\* Double and/or joint degree available

\*\* Erasmus Mundus Joint Master Degree

■ Italian-taught  
■ English-taught

# MEDICINE

## Bachelor's degrees (3 years)

Applied pharmaceutical science

Audioprothetic techniques

Audiometric techniques

Biomedical laboratory techniques

Childhood neuro and psychomotricity

Dental hygiene

Dietetic

Environment and workplace prevention techniques

Health assistance

Human movement sciences

Imaging and radiotherapy techniques

Midwifery

Neurophysiopathology techniques

Nursing

Occupational therapy

Orthoptic and ophthalmologic assistance

Physiotherapy

Professional education

Psychiatric rehabilitation technique

Speech and language therapy

## Master's degrees (2 years)

Health professions of prevention sciences

Health professions of rehabilitation sciences

Health professions of technical sciences (diagnostic)

Nursing and midwifery sciences

Preventive and adapted physical activity

## Master's degrees (2 years)

Medical biotechnologies\*

Pharmaceutical biotechnologies

## Single-cycle degrees

Chemistry and pharmaceutical techniques (5 years)

Medicine and surgery (6 years)

Pharmacy (5 years)

School of dentistry (6 years)

## Single-cycle degree (6 years)

Medicine and surgery

\* Double and/or joint degree available

■ Italian-taught

■ English-taught

# PSYCHOLOGY

## Bachelor's degrees (3 years)

Cognitive psychology and psychobiology

Developmental, personality and interpersonal relationships psychology

Psychological sciences and techniques

Social and work psychology

## Master's degrees (2 years)

Applied cognitive psychology

Clinical Developmental Psychology

Clinical dynamic psychology

Clinical psychology

Developmental and educational psychology

Forensic psychology and clinical criminology (intra University)

Neuroscience and neuropsychological rehabilitation

Psychology of community, wellness promotion, and social change

Social, work and communication psychology

## Bachelor's degrees (3 years)

Psychological science

Techniques and methods in psychological science

## Master's degrees (2 years)

Clinical, social and intercultural psychology\*

Cognitive neuroscience and clinical neuropsychology\*

Applied child and adolescent psychology (to be approved)

NEURODATA - Brain and Data Science\*\*

\* Double and/or joint degree available

■ Italian-taught  
■ English-taught



# SCIENCE

## Bachelor's degrees (3 years)

Astronomy

Biology

Biotechnology

Chemistry

Computer science

Environmental and natural sciences

Environmental sciences and technology

Geological science

Industrial chemistry

Materials science

Mathematics

Molecular biology

Optics and optometry

Physics

Statistics for economics and business

Statistics for technology and science

## Master's degrees (2 years)

Chemistry\*

Geology and technical geology

Industrial biotechnology

Industrial chemistry

Sanitary biology

Statistical sciences

## Bachelor's degrees (3 years)

Biology of human and environmental health (intra University)

Earth and climate dynamics

## Master's degrees (2 years)

Astrophysics and cosmology

Complex and data driven chemistry

Computational finance

Computer science

Cybersecurity

Data science

Earth dynamics

Environmental sustainability and education

Evolutionary biology

Geophysics for natural risks and resources

International cybersecurity and cyberintelligence\*\*\*

Marine biology

Materials science\*

Mathematics\*

Molecular biology\*

Physics\*

Physics of data

Quantitative and computational biosciences

Sustainable chemistry and technologies for circular economy

BDMA - Big Data Management and Analytics\*\*

NUCPHYS - Nuclear physics\*\*

\* Double and/or joint degree available

\*\* Erasmus Mundus Joint Master Degree

\*\*\*Arqus alliance joint master degree

■ Italian-taught

■ English-taught

# PhD COURSES

## Hard Sciences

Astronomy

Fusion science and engineering\*

Geosciences

Industrial engineering

Information engineering

Management engineering and real estate economics

Mathematical sciences

Mechatronics and product innovation engineering

Molecular sciences

Physics

Sciences of civil, environmental and architectural engineering

Sciences, technologies and measurements for space

Statistical sciences

## Humanities

Economics and management

Human rights, society, and multi-level governance\*

## Interdisciplinary

Brain, mind and computer science

Land, environment, resources and health

Social sciences

## Life Sciences

Animal and food science

Biosciences

Crop science

Psychological sciences

## Medical and Biomedical Sciences

Arterial hypertension and vascular biology (ARHYVAB)\*

Biomedical sciences

Clinical and experimental sciences

Molecular medicine

Neuroscience

Veterinary sciences and food safety

\* International joint doctorate Programme

■ English-taught

## Humanities

Historical, geographical, anthropological studies

History, criticism and preservation of cultural heritage

International, private and labour law

Law

Linguistic, philological and literary sciences

Pedagogical, educational and instructional sciences

Philosophy

## Medical and Biomedical Sciences

Clinical and experimental sciences

Developmental medicine and health planning sciences

Pharmacological sciences

Translational specialistic medicine "G.B. Morgagni"

# OFFICE CONTACT DETAILS

## CALL CENTRE

☎ +39 049.8273131

✉ [callcentre@unipd.it](mailto:callcentre@unipd.it)

Mon - Fri 9am - 5pm

## CAREER SERVICE OFFICE

Palazzo Storione  
Riviera Tito Livio 6,  
35123 Padua

☎ +39 049.8273075

✉ [stage@unipd.it](mailto:stage@unipd.it)

✉ [placement@unipd.it](mailto:placement@unipd.it)

Mon - Fri 10am - 2pm

Tue and Thu 3 - 5pm

Telephone office hours:

Mon - Fri 10am - 1pm

Tue and Thu 3 - 4.30pm

## ESU - AZIENDA REGIONALE PER IL DIRITTO ALLO STUDIO UNIVERSITARIO

Via San Francesco 122,  
35121 Padua

☎ +39 049.8235611

✉ [esu@esu.pd.it](mailto:esu@esu.pd.it)

[www.esu.pd.it/en](http://www.esu.pd.it/en)

## INTERNATIONAL RELATIONS DIVISION

### GLOBAL ENGAGEMENT OFFICE

Palazzo Anselmi - Lungargine  
del Piovego 1, 35131 Padua

☎ +39 049.8273131

✉ [international.admission@unipd.it](mailto:international.admission@unipd.it)

(only by appointment)

### MOBILITY UNIT

Palazzo Anselmi - Lungargine del  
Piovego 1, 35131 Padua

☎ +39 049.8273061

✉ [erasmus@unipd.it](mailto:erasmus@unipd.it)

Mon - Wed - Fri 10am - 1pm

Tue - Thu 10am - 1pm and 3 - 4.30pm

Fri (only by appointment)

### HOUSING OFFICE

✉ [housing@unipd.it](mailto:housing@unipd.it)

[www.unibeds.it](http://www.unibeds.it)

## PHD AND POST LAUREAM OFFICE

### PHD

Via Venezia 15, 35131 Padua

☎ +39 049.8276071

✉ [phd@unipd.it](mailto:phd@unipd.it)

Mon - Wed - Fri 10am - 1pm

Tue 10am - 1pm and 3 - 4.30pm

Thu 10am - 3pm

## POST LAUREAM

(short specialisation degrees,  
specialisation degrees)

Via U. Bassi 1, 35131 Padua

☎ +39 049.8276373

✉ [titoliesteri.lauream@unipd.it](mailto:titoliesteri.lauream@unipd.it)

Mon - Wed - Fri 10am - 1pm

Tue 10am - 1pm and 3 - 4.30pm

Thu 10am - 3pm

Telephone office hours:

Mon to Fri 10 - 12.30am

## PUBLIC RELATIONS OFFICE - URP

Palazzo Bo - Via 8 Febbraio 2,  
35122 Padua

☎ +39 049.8273338

✉ [urp@unipd.it](mailto:urp@unipd.it)

Opening hours:

Mon to Fri 9am - 12.30pm

## SAOS

Palazzo Bo - Via 8 Febbraio 2,  
35122 Padua

☎ +39 049.8273077

✉ [saos@unipd.it](mailto:saos@unipd.it)

Mon and Wed 11.30am - 1pm

Tue 3 - 4.30pm Thu 1.30 - 3pm

Mon and Wed 10am - 11.30am (only  
by appointment)

Skype (saosdesk.unipd): Tue 5 - 6pm

## STUDENT CAREER OFFICE

### AGRIPOLIS

(School of Agricultural Sciences  
and Veterinary Medicine only)

Viale dell'Università 16,  
35020 Legnaro (PD)

☎ +39 049.8272540

Mon - Fri 10am - 12pm

Tue also 3 - 4pm

Wed closed

### CASA GRIMANI

(other Schools)

Lungargine del Piovego 2/3,  
35131 Padua

☎ +39 049.8273131

✉ [carriere.studenti@unipd.it](mailto:carriere.studenti@unipd.it)

Mon to Fri 10am - 12pm

Tue also 3 - 4pm

## STUDENT SERVICE OFFICE

### ECONOMIC BENEFITS

Via del Portello 31, 35129 Padua

☎ +39 049.8273131

✉ [benefici.studenti@unipd.it](mailto:benefici.studenti@unipd.it)

Mon - Wed - Fri 10am - 1pm,

Tue 10am - 1pm and 3 - 4.30pm,

Thu 10am - 3pm

## GUIDANCE AND TUTORING

Via del Portello 19, 35129 Padua

☎ +39 049.8275044

✉ [orienta@unipd.it](mailto:orienta@unipd.it)

✉ [tutorato@unipd.it](mailto:tutorato@unipd.it)

Mon - Wed - Fri 10am - 1pm

Tue 10am - 1pm and 3 - 4.30pm

Thu 10am - 3pm

## INCLUSION

Via del Portello 23, 35129 Padua

☎ +39 049.8275038

✉ [inclusion.studenti@unipd.it](mailto:inclusion.studenti@unipd.it)

Mon - Wed - Fri 10am - 1pm

Tue 10am - 1pm and 3 - 4.30pm

Thu 10am - 3pm

## UNIVERSITY LANGUAGE CENTRE

Via Venezia 16, 35131 Padua

☎ +39 049.8276185

[www.cla.unipd.it/en](http://www.cla.unipd.it/en)



[web.unipd.it/international](http://web.unipd.it/international)

## **EDITING**

Global Engagement Office  
University of Padua

## **GRAPHIC DESIGN**

Communication Office - Communication and Marketing Area  
University of Padua

## **TRANSLATION**

Language Centre  
University of Padua

© 2024 Università degli Studi di Padova  
Content updated as of December 2024

The FSC logo is a vertical rectangle with rounded corners, containing the letters "FSC" in a bold, sans-serif font.

**FSC**

UNIVERSA UNIVERSIS PATAVINA LIBERTAS



UNIVERSITÀ  
DEGLI STUDI  
DI PADOVA

[WWW.UNIPD.IT](http://WWW.UNIPD.IT)