



ERASMUS+

GENERAL RULES ON
HOW TO CHOOSE COURSES
AND PREPARE THE LEARNING AGREEMENT

1222 • 2022
800
ANNI



UNIVERSITÀ
DEGLI STUDI
DI PADOVA

Last update: 20/04/2022

In this guide you will find useful information on how to choose courses at Unipd.

Please read it carefully and follow the instructions: in this way, you will be able to prepare your Learning Agreement "Before the mobility" for the Application form on Uniweb.

For further info about how to fill in the Application form, please visit our website:

<https://www.unipd.it/en/exchange-students/erasmus-studies/your-arrival-erasmus-studies>

TABLE OF CONTENTS

1) LEARNING AGREEMENT TEMPLATE	3
2) HOW TO FILL IN THE LEARNING AGREEMENT.....	3
3) HOW TO BROWSE THE COURSE CATALOGUE	6
4) HOW TO CHOOSE YOUR COURSE UNITS	11
5) GENERAL RESTRICTIONS.....	12
SCHOOL OF AGRICULTURAL SCIENCES AND VETERINARY MEDICINE	14
DEPARTMENT OF ECONOMICS AND MANAGEMENT.....	15
SCHOOL OF ENGINEERING.....	16
SCHOOL OF HUMAN AND SOCIAL SCIENCES AND CULTURAL HERITAGE.....	17
SCHOOL OF LAW.....	19
SCHOOL OF MEDICINE AND SURGERY.....	20
DEPARTMENT OF PHARMACEUTICAL SCIENCES	21
DEPARTMENT OF POLITICAL SCIENCE, LAW AND INTERNATIONAL STUDIES (SPGI).....	22
SCHOOL OF PSYCHOLOGY	23
SCHOOL OF SCIENCE.....	24
6) TIMETABLE AND ACADEMIC CALENDAR	25
7) CONTACTS	25

1) LEARNING AGREEMENT

1 | Online Learning Agreement (OLA)

If your Home University uses the OLA – Online Learning Agreement, you will have to fill it online following your Home University's instructions and it will be digitally transmitted to us.

However, students will have to upload it in our Application Form on Uniweb a digital “receipt” (i.e. a screenshot, confirmation email, etc.) of your OLA approved by your Home University.

2 | Paper/file Learning Agreement

If your Home University does not provide you with a template for the LA, you can download the European version from our website: <https://www.unipd.it/en/exchange-students/erasmus-studies/your-arrival-erasmus-studies> (see STEP 2). Using this template is not mandatory; we will accept your Home University template as long as it has a section for the signature of the Receiving Institution.

2) HOW TO FILL IN THE LEARNING AGREEMENT

The Learning Agreement should be used in **2 different moments** of your Erasmus mobility:

1 | LA Before the mobility

To be filled out BEFORE the beginning of your Erasmus. List the courses you want to attend at Unipd (Table A) and the courses at your Home University that will be replaced (Table B). This is how to proceed:

- Browse the [course catalogue](#) and choose your courses
- Fill in the LA Before the mobility, Table A and B

Then:

If OLA:

- Submit the OLA following your Home University's instructions to have it approved
- Upload a digital “receipt” (i.e. a screenshot, confirmation email, etc.) of your approved OLA in pdf format on our Application form in Uniweb
- We will check your OLA and comment or approve it. You will be digitally notified.

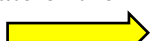
If on paper/file:


- Sign it yourself and get the signature from your coordinator at your Home University
- Upload the signed LA in pdf format on our Application form in Uniweb (DO NOT send your LA directly to the Erasmus Academic Coordinator at Unipd for approval).
- We will check the LA and send it back to you and your Home University by e-mail, duly signed by the Academic Coordinator at Unipd

2 | LA During the mobility

If you change your mind about the courses you chose, or if the lectures timetable overlaps, you can change the LA During the mobility. If your LA is on paper/file only, find here the template and the instructions: <https://www.unipd.it/en/exchange-students/erasmus-studies-incoming/during-your-stay-erasmus-studies>



In Unipd's template of the "Learning Agreement - Before the Mobility"
a yellow arrow  indicates the sections you need to fill in:



Erasmus+

Higher Education

Learning Agreement for Studies

Student's name _____



Academic Year 20__/20__

Student	Last name(s)	First name(s)	Date of birth	Nationality ¹	Sex [M/F]	Study cycle ²	Field of education ³

Sending Institution	Name	Faculty/Department	Erasmus code ⁴ (if applicable)	Address	Country	Contact person name ⁵ ; email; phone	
	
Receiving Institution	Name	Faculty/ Department	Erasmus code (if applicable)	Address	Country	Contact person name; email; phone	
	UNIVERSITA' DEGLI STUDI DI PADOVA	International Relations Office	I-PADOVA01	Via VIII Febbraio 2, 35122 Padova	ITALY	Irene Occhipinti, Elisa Zambon Erasmus.incoming@unipd.it +39 0498273061	

Before the mobility


Study Programme at the Receiving Institution

Table A Before the mobility 	Planned period of the mobility: from [month/year] to [month/year] 			
	Component ⁶ code (if any)	Component title at the Receiving Institution (as indicated in the course catalogue ⁷)	Semester [e.g. autumn/spring; term]	Number of ECTS credits (or equivalent) ⁸ to be awarded by the Receiving Institution upon successful completion

			Total: ...	
Web link to the course catalogue at the Receiving Institution describing the learning outcomes: [web link to the relevant information]				

The level of language competence⁹ in _____ [indicate here the main language of instruction] that the student already has or agrees to acquire by the start of the study period is: A1 ☐ A2 ☐ B1 ☐ B2 ☐ C1 ☐ C2 ☐ Native speaker ☐

Recognition at the Sending Institution

Table B Before the mobility 	Component code (if any)	Component title at the Sending Institution (as indicated in the course catalogue)	Semester [e.g. autumn/spring; term]	Number of ECTS credits (or equivalent) to be recognised by the Sending Institution

			Total: ...	
Provisions applying if the student does not complete successfully some educational components: [web link to the relevant information]				

Commitment

By signing this document, the student, the Sending Institution and the Receiving Institution confirm that they approve the Learning Agreement and that they will comply with all the arrangements agreed by all parties. Sending and Receiving Institutions undertake to apply all the principles of the Erasmus Charter for Higher Education relating to mobility for studies (or the principles agreed in the Inter-Institutional Agreement for Institutions located in Partner Countries). The Sending Institution and the student should also commit to what is set out in the Erasmus+ grant agreement. The Receiving Institution confirms that the educational components listed in Table A are in line with its course catalogue and should be available to the student. The Sending Institution commits to recognise all the credits gained at the Receiving Institution for the successfully completed educational components and to count them towards the student's degree as described in Table B. Any exceptions to this rule are documented in an annex of this Learning Agreement and agreed by all parties. The student and the Receiving Institution will communicate to the Sending Institution any problems or changes regarding the study programme, responsible persons and/or study period.

Commitment	Name	Email	Position	Date	Signature
Student			Student		
Responsible person ¹⁰ at the Sending Institution					
Responsible person at the Receiving Institution ¹¹			Prof.		

Pay attention to the following sections!

- 1 | **PERSONAL DATA:** write your full name and the academic year in the top right corner of the page (double click on the header area to write), and fill in the section regarding the Student, the Sending Institution and the Receiving Institution.
- 2 | **CONTACT PERSON:** you can either write the name of the officer working at the central Mobility Unit desk (Federica Bison/Elisa Zambon and the email erasmus.incoming@unipd.it) or the name of the officer working at the Mobility Unit desk at the School/Department you are assigned to (contacts: <http://www.unipd.it/en/desks-and-contacts>).
- 3 | **ERASMUS CODE:** the Erasmus code of the University of Padua is I PADOVA 01.
- 4 | **TABLE A:** don't forget to write the "Planned period of the mobility" and the code of each course unit - see [point 3\) HOW TO BROWSE THE COURSE CATALOGUE](#) to know where to find course details.
- 5 | **LANGUAGE COMPETENCE:** you need to write the language of instruction of the courses you choose.
- 6 | **SIGNATURES:** the Learning Agreement you will upload in the Application form on Uniweb must be signed by you and the Responsible person at your Home University (Sending institution), otherwise it will not be accepted.
The LA doesn't have to be signed by the Erasmus Coordinator at Unipd: they will sign it once the application procedure is completed and you will receive via email the approved LA. Please leave the Unipd's section for signatures blank!

→ PLEASE, CANCEL THE YELLOW ARROWS WHEN YOU'RE DONE! ←



3) HOW TO BROWSE THE COURSE CATALOGUE

The official catalogue for the new academic year is usually published in May/June. At the time of publication, the catalogue is not exhaustive, the complete list of course units will be available only a few weeks later and the details of the courses may be updated until classes start. If the new catalogue is not available yet, you can refer to the information for the current academic year. We strongly suggest that you check again the courses you chose before the start of the semester.

Exchange students can choose from almost all course units offered at Unipd. Please be aware that there might be restrictions on some courses (refer to the [“RESTRICTIONS”](#) section of this guide to see specific conditions for each School/Department).

The full academic offer of the University of Padua is available at the following links:

- <http://www.didattica.unipd.it> (Italian version)
- <http://en.didattica.unipd.it> (English version)
- <https://en.didattica.unipd.it/catalogues> (quick link to courses units held in English)

You can browse the catalogue by School, by level of study (Bachelor, Master, Single cycle degree) and by degree programme.

First

Click on the most recent academic year under the column “Scegli l’A.A. di immatricolazione” / “Select your enrollment Academic Year”.

The screenshot shows the 'Educational offer' page of the University of Padua. The page has a red header with the university name and navigation links. Below the header, there is a search bar and a 'Home' link. The main content area is titled 'Educational offer' and contains a list of links for selecting an academic year. A green arrow points to the 'A.Y. 2020/21' link, which is the most recent year listed.

UNIVERSITÀ DEGLI STUDI DI PADOVA Unipd.it Contacts IT EN Webmail Inweb

Educational offer Search

Home

▼ Educational offer

Here you can find the information about all the course units of the degree courses offered by the University of Padua.

For each course unit you will find all available details such as the educational aims, the syllabuses and the lecturers' names.

Please select your enrollment academic year up here on the right, then choose the type of degree course, the School and the degree course in order to get all the information.

[Download "Prospetto dell'offerta formativa" \(official overview of educational offer\) A.Y. 2020/21.](#)

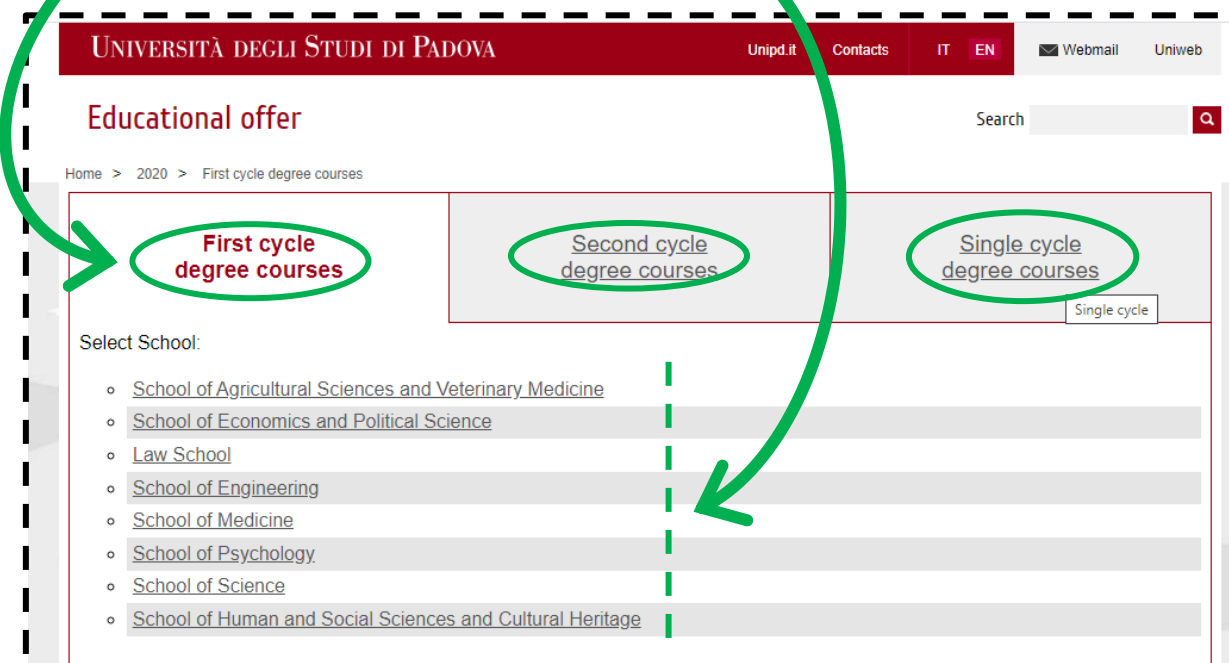
Select your enrollment Academic Year:

- [A.Y. 2020/21](#)
- [A.Y. 2019/20](#)
- [A.Y. 2018/19](#)
- [A.Y. 2017/18](#)
- [A.Y. 2016/17](#)
- [A.Y. 2015/16](#)
- [A.Y. 2014/15](#)
- [A.Y. 2013/14](#)
- [A.Y. 2012/13](#)
- [A.Y. 2011/12](#)

Second

By using the tabs at the top of the page, you can select the level of study.

Under the tabs, you see the list of Schools where the courses are offered.



Third

Click on the name of the School of your interest, the list of degree programmes will appear.



Fourth

Click on the degree programme name to get the full list of course units.

Fifth

Click on the Academic Year to see the syllabus and all the info on a course unit.

001PD	LE19108744	GREEK HISTORY	9	1st Year	First	ITA	ALESSANDRA COPPOLA
		A.Y. 2020/21 details		(2020/21)	semester		
001PD	LE02111993	LATIN LITERATURE 1	9	1st Year	First	ITA	GIANLUIGI BALDO
		A.Y. 2020/21 details		(2020/21)	semester		
002PD	LE25108769	MODERN HISTORY	9	1st Year	First	ITA	EGIDIO IVETIC
		A.Y. 2020/21 details		(2020/21)	semester		

COURSE UNIT INFO PAGE

Please note that, especially for the course units held in Italian, the English version may not display the full information. Always check the Italian version to verify whether the content of the course unit page is complete.

Clicking on “A.Y. 20XX/XX” (in the Italian version, “Info e programma A.A. 20XX/XX”), the complete information related to the course unit in that academic year will be displayed.

The most important specifics of a course unit are:

- a.** Full name
- b.** Code (you will have to write it in the Learning Agreement). **PAY ATTENTION!!!** there could be course units with the same title, but different codes!
- c.** Information on the course unit
 - Degree programme (Bachelor or Master) in which the course is offered
 - Number of ECTS credits awarded
 - Type of assessment: it can be either a mark or only “Pass/Fail”
 - Department of reference
 - E-Learning website where the Teacher uploads academic material
 - Mandatory attendance: whether the attendance is mandatory or not
 - Language of instruction
 - Branch: the campus where the course unit is offered (other campuses are Legnaro, Treviso, Vicenza or Rovigo, some of them rather far from Padua)
 - Course unit for Erasmus students (i.e. exchange students in general): whether the course unit is available to exchange students
- d.** Lecturers: the name of the Teacher in charge will appear in this section
- e.** Course unit organisation: the period (semester, trimester, annual) and the teaching methods
- f.** Calendar: start and end date of activities*
- g.** Syllabus: Prerequisites (to be checked carefully), Target skills and knowledge, Examination methods, Assessment criteria, Contents

*The dates reported here the general key academic dates, they may not be the real start/end dates! The real dates will be available in the [Timetable portal](#) a few weeks before the start of the classes. Classes may also start earlier: For example: in the 1st semester the *Master’s degree in Forest Science* starts on 26/09/22; in the 2nd semester the *Bachelor’s degrees in Dietistic and Nursing* start on 06/02/23.



EXAMPLE:

Course unit
GEOGRAPHY (Iniziali cognome A-L)
LE08103478, A.A. 2021/22

Information concerning the students who enrolled in A.Y. 2021/22

Information on the course unit

Degree course	First cycle degree in HUMANITIES LE0598, Degree course structure A.Y. 2018/19, A.Y. 2021/22
Degree course track	Common track
Number of ECTS credits allocated	9.0
Type of assessment	Mark
Course unit English denomination	GEOGRAPHY
Department of reference	Department of Linguistic and Literary Studies
Mandatory attendance	No
Language of instruction	Italian
Branch	PADOVA
Single Course unit	The Course unit can be attended under the option Single Course unit attendance
Optional Course unit	The Course unit can be chosen as Optional Course unit
Course unit for Erasmus students	The course unit can be attended by Erasmus+ and other exchange students



bring this page
with you

Lecturers

Teacher in charge

[MAURO VAROTTO](#)

mauro.varotto@unipd.it

M-GGR/01

ECTS: details

Type	Scientific-Disciplinary Sector		Credits allocated
Basic courses	M-GGR/01	Geography	9.0

Course unit organization

Period Second semester
Year 1st Year
Teaching method frontal

Type of hours	Credits	Teaching hours	Hours of Individual study	Shifts
Practice	1.0	16	9.0	No turn
Lecture	8.0	56	144.0	No turn

Calendar

Start of activities 01/03/2021
End of activities 12/06/2021
Show course schedule [2020/21 Reg.2018 course timetable](#)

Syllabus

Prerequisites:	Basic knowledge of translation theory and of the main problems of English-Italian translation.
Target skills and knowledge:	Advanced knowledge of Translation Studies from the 1950s to the present with special reference to problems and trends in technical, scientific, economic and legal translation; advanced skills in text analysis, terminology management, translation of LSP texts and translation criticism.
Examination methods:	Written test with multiple choice and open questions on the course topics.
Assessment criteria:	Ability to outline problems and trends in Translation Studies, to analyse LSP texts and their translations, to identify their features, decide how they can be translated and assess their quality.

If you need any clarification or further information about the contents of a course unit, you can **write an e-mail to the teacher**. Click on the name of the teacher and see their complete information, such as: their email address, the Department they belong to, their office hours and the list of course units they teach.

VAROTTO MAURO

▼ **Contacts**

E-mail	mauro.varotto@unipd.it
Structure	Department of Historical and Geographic Sciences and the Ancient World
Telephone	0498274087
Qualification	Professore associato confermato
Scientific sector	M-GGR/01 - GEOGRAPHY
University telephone book	Show

Il ricevimento di mercoledì 3 febbraio 2016 è posticipato alle ore 10.30.

▼ **Office hours**

Wednesday	from 11:00 to 12:30	Palazzo Wollemborg, Via del Santo 26 - Il piano
-----------	---------------------	---

(updated on 18/03/2015 10:01)

Most updated info:

During the academic year, any information related to the course unit (such as changes of timetable) will be published in the Department's website or in the course unit page in Unipd's e-learning platform (Moodle).

You can find the Department in the first section of the course unit info page and click on it to reach their website, the link to the e-learning platform is usually available there.

Course timetable:

Class timetables change each year! Do not base your choice of courses on the previous year's timetable!

Italian language course:

You won't find in the course catalogue the Italian language course offered by our Language Centre, CLA – Centro Linguistico di Ateneo, which all exchange students can attend.

The course is **free of charge and it's 3 ECTS worth**. It can be **added to your LA** as "Italian Language Lab – L2" and it does not have any code.

Classes start in October (first semester) and in March (second semester). The registration period opens around 2 weeks before the language courses start.

For further info: <http://cla.unipd.it/en/courses/italian-courses/biannual-courses/>

4) HOW TO CHOOSE YOUR COURSE UNITS

NON AVAILABLE COURSES:

Exchange students can choose almost all course units offered at Unipd, but there are a few courses that **Erasmus students cannot attend**.

Course unit for Erasmus students The course unit CANNOT be attended by Erasmus+ or other exchange students

Please check **BOTH** the “Information on the course unit” section in the course unit’s info page of the course catalogue (see the example above) **AND** the “RESTRICTIONS” section of this guide for further information about the course units you can attend in each School/Department and for additional conditions/requirements (the course catalogue may not report all the restrictions!).

Exchange students are allowed to select also course units offered by Schools/Departments other than the one they are assigned to. If they do, they must read the information provided in this guide by all the Schools/Departments involved in their choice.

Nonetheless, **we warmly recommend** to choose, as much as possible, courses from the same degree programme (and possibly the same course year), in order to avoid timetable clashes and back-to-back classes held at distant locations (timetables and classrooms schedules are managed by degree programme and study year).



5) GENERAL RESTRICTIONS

You will find below crucial information on course units with restricted access which is valid for **all Schools/Departments**.

1

BACHELOR or MASTER LEVEL COURSES: We strongly advise **Bachelor students** to attend Bachelor level courses only. Master students can choose courses from both levels if needed and if allowed by their Home universities. Master's courses may have restricted access for Master level students only, so carefully read the Restrictions section for the School/Department. Most course units held in English are taught at Master level.

2

If you plan to enrol at Unipd as a degree seeker in the future: don't attend course units from the Master course you plan to enrol in. You cannot take an exam twice: if you take an exam during your exchange period and it's a mandatory exam of a Master course, you won't be able to enrol in that Master course in the future!

3

CORSI INTEGRATI/INTEGRATED COURSE UNITS: Check carefully the course unit info page to see if the course you chose is a “corso integrato”- The courses are structured in two or more “modules” and in order to get any credits passing **all the modules is compulsory**.

You should not attend just one module of a “corso integrato”: even if you pass the corresponding examination, the grade and the credits will not be registered in your booklet and will not appear in your final Transcript of Records.

You can identify a “corso integrato” by checking the course unit name, which includes the acronym “(C.I.)”, while each module's name is identified by “(MOD A/B/C)”

>>>


ONLY EXCEPTIONS: School of Agriculture and Veterinary Medicine and School of Medicine, please see the relevant sections of this guide.

See an example below:

LIST OF COURSE UNITS IN A DEGREE PROGRAMME INFO PAGE:

COMMON	EPQ0090198	CONTEMPORARY POLITICAL CONCEPTS ANALYSIS (C.I.)					ENG	FRANCESCO BERTI
		A.Y. 2020/21 details						
»	EPQ0090200	CONTEMPORARY EUROPEAN POLITICAL THOUGHT (MOD. A)	6	1st Year	First	(2020/21)	ENG	FRANCESCO BERTI
		A.Y. 2020/21 details						
»	EPQ0090199	DECOLONIAL STRATEGIES (MOD. B)	6	1st Year	First	(2020/21)	ENG	MAURO FARNESI
		A.Y. 2020/21 details						CAMELLONE

COURSE UNIT INFO PAGE:



Course unit
CONTEMPORARY POLITICAL CONCEPTS ANALYSIS (C.I.)
EPQ0090198, A.A. 2020/21

Information concerning the students who enrolled in A.Y. 2020/21

Information on the course unit	
Degree course	Second cycle degree in EUROPEAN AND GLOBAL STUDIES EP2444, Degree course structure A.Y. 2018/19, A.Y. 2020/21
Degree course track	Common track
Number of ECTS credits allocated	
Type of assessment	Mark
Course unit English denomination	CONTEMPORARY POLITICAL CONCEPTS ANALYSIS (C.I.)
Department of reference	Department of Political Science, Law, and International Studies
Mandatory attendance	No
Language of instruction	English
Branch	PADOVA
Single Course unit	The Course unit can be attended under the option Single Course unit attendance
Optional Course unit	The Course unit can be chosen as Optional Course unit



bring this page
with you

Lecturers			
Teacher in charge	FRANCESCO BERTI	francesco.berti@unipd.it	SPS/02

Modules of the integrated course unit		
Course unit code	Course unit name	Teacher in charge
EPQ0090200	CONTEMPORARY EUROPEAN POLITICAL THOUGHT (MOD. A)	FRANCESCO BERTI
EPQ0090199	DECOLONIAL STRATEGIES (MOD. B)	MAURO FARNESI CAMELLONE

SPECIAL CONDITIONS FOR EACH SCHOOL/DEPARTMENT

In addition to the general restrictions mentioned above, **each School/Department might have its special conditions**, which may not be all mentioned in the course catalogue. Therefore, we suggest that you read carefully the relevant section of this guide, according to the area of your studies.

If you are interested in courses offered by a School/Department other than the one you are assigned to, please read the information provided below by the relevant School/Department before selecting the course.

If you need support about academic issues, you can contact the relevant Erasmus desks at each School/Department: <https://www.unipd.it/en/desks-and-contacts>



SCHOOL OF AGRICULTURAL SCIENCES AND VETERINARY MEDICINE

At the School of Agriculture and Veterinary Medicine, **modules of “corsi integrati/integrated course units”** can be attended separately. However, the grades and credits of such modules will not be registered in the booklet. Therefore, the student should ask the professor for the release of a certificate attesting the passed module/s.

1) Master’s degree programme in *Italian Food and Wine* (AV2190):

The following course units have **restricted places** for Erasmus students.

Students must send the Transcript of Records to the responsible professor at the time of drafting their LA, before the approval by the Home University:

- AVP7079977, *Quality, processing and sensorial analysis of Italian wine* (6 ECTS)
- AVP5070079, *Quality, processing and sensorial analysis of Italian food* (8 ECTS)

2) Single Cycle Master’s degree programme in *Veterinary Medicine* (MV0991): courses are **open to Veterinary students only**.

3) **Non available courses:**

- Courses of English language
- AVP5072138, *Communication skills* (2 ECTS)
- AVP5073958, *Communication skills* (1 ECTS)
- AVP9087638, *Directed studies* (4 ECTS) of the Master’s degree programme AV2091 *Forest Science*
- AVP7078737 *Joint field module* (4 ECTS) of the Master’s degree programme AV2091 *Forest Science*

4) **Additional Information:**

- Check if course units have a grade (courses for 3 or 4 credits). If not, you need to ask a grade separately to the professor
- Course units in Master’s degree programmes are available for advanced Bachelor students if they have a good English language proficiency (B2 minimum)
- Check the location (“branch”) of the course unit, we have campuses in Legnaro (main Campus), Vicenza and Conegliano

5) Start of activities: the *Master’s degree in Forest Science* starts earlier, on 26/09/2022.

DEPARTMENT OF ECONOMICS AND MANAGEMENT

The Department of Economics and Management offers 5 degree programmes:


- 1 Bachelor's degree programme in *Economics* (EP2093);
- 4 Master's degree programmes: *Business Administration* (EP2423), *Economics and Finance* (EP2422), *Law and Economics* (EC0222), *Entrepreneurship and Innovation* (EP2372).

1) TRIMESTERS AND SEMESTERS

Courses are offered on a semester basis (Semester 1 and 2), except for those belonging to the 3rd year of the Bachelor level, organized in trimesters (Trimester 1, 2 and 3).

Pay attention to the academic dates, which are different for semesters and trimesters. You can check the Academic Calendar here:

<https://www.unipd.it/en/key-academic-dates>



Some classes of the Semester 1 and the Trimester 2 might start one week before the official date reported in the Academic Calendar. You are strongly invited to check the timetable in advance.

2) COURSES NOT OPEN TO EXCHANGE STUDENTS

Exchange students are not allowed to choose the following course units (you can find the code of the degree programme in brackets):

- EPP4064621, *Governo e gestione delle aziende 1* (EP2093)
- EPP3060538, *Cinese per l'economia ed il management* (EP2423)
- ECO2048815, *Intercultural management, theory and practice* (EP2423)
- SPO2044655, *Lingua inglese* (EP2093)
- EC01103904, *Informatica* (EP2093)
- EPP6077317, *English for economics and business* (EP2423, EP2422)
- ECO2045856, *Inglese per l'economia e il management* (EC0222)
- EPP6077097, *English for economics and business* (EP2372)



SCHOOL OF ENGINEERING

1) CAMPUSES in other towns: VICENZA and ROVIGO

Exchange students may choose from almost all course units offered by the School. But not all courses are held in Padua! Some of them are held in Vicenza or Rovigo (more than 30 minutes away by train).



– The following degree programmes are held in Vicenza:

- *Product Innovation Engineering* (Bachelor, IN2375)
- *Mechatronic Engineering* (Bachelor, IN2376)
- *Engineering and Management* (Bachelor, IN0509)
- *Product Innovation Engineering* (Master, IN0531)
- *Mechatronic Engineering* (Master, IN0529)

– The following course unit is partially held in Rovigo:

- INP7080079, *Lab of Advanced Product and Process Engineering* (6 ECTS)

From a.y.2020/21 it will be mainly given in Padua campus. Please note that the laboratory (representing less than 1/3 of the total hours) will be held in Rovigo at the TE.SI. Laboratory.

2) THESIS

Students can undertake thesis research, but they must find a supervisor on their own by contacting the relevant Department at the School of Engineering. In this case,

you must attach to your Learning agreement (in one file) a separate sheet including the following info:

- A description of the topic of your project (not only a title, more than a sentence)
- The number of credits you will earn for the project at your home university
- The name and contact details of your supervisor at your home university
- The name of your supervisor at Unipd, if already agreed. If you are not able to find a supervisor, please indicate the most suitable Department among these:

[I.C.E.A. \(Civil, Building and Environmental Engineering Department\)](#)

[D.I.I. \(Industrial Engineering Department\)](#)

[D.E.I. \(Information Engineering Department\)](#)

[D.T.G. \(Department of Management and Engineering - based in Vicenza\)](#)

3) Project-based courses: they can be supervised in English, even if held in Italian.

4) The Master's degree course *Sustainable Territorial Development* (IA2545) is not open to exchange students.

5) The Single cycle degree course in *Building Engineering and Architecture* (IN0533) has mandatory attendance.

6) **BACHELOR STUDENTS ONLY**: there are few course units held in English at Bachelor level, you are allowed to attend Master level courses, but be careful! Master level courses may be very advanced and you may not have the sufficient background. Please check carefully the pre-requisites in the Course Catalogue.



SCHOOL OF HUMAN AND SOCIAL SCIENCES AND CULTURAL HERITAGE

1) PRIMARY TEACHER EDUCATION COURSES:

Some of the course units within the degree programme in “*Primary teacher education*” are composed by both lectures and laboratories (see the details in the section “Course Unit Organization/ Organizzazione dell’insegnamento” of the course catalogue).

Laboratories are always compulsory, so students must attend them, otherwise the activity cannot be registered in the final Transcript of Records.

2) LANGUAGE COURSES offered by the following degree programmes:

- SU2294, *Language, literature and cultural communication*
- LE0613, *European and American languages and literatures*
- IF0314, *Modern languages for international communication and cooperation*

The Language courses are held during the 1st or 2nd semester (see course catalogue). In addition to the lectures the University offers the language classes (“Didattica Assistita”) providing students with the relevant linguistic skills (writing, reading, listening and speaking). These are non-credit bearing classes held during the whole academic year (annual classes, both 1st and 2nd semester) complementing the course. The final exam of the course consists in one or more parts evaluating the contents provided during the lectures and one part aiming at verifying the acquisition of the linguistic skills. Exchange students attending these Language Courses are required to contact the professor of the course at the beginning of the lectures.

Select the appropriate language course based on your language level.



3) “EDUCATIONAL SCIENCES” (SF1334) and “MANAGEMENT OF EDUCATIONAL SERVICES AND LIFELONG EDUCATION” (SU2089)

Courses of these degrees are **held in the city of Rovigo**, approx. 50 km away from Padova. Rovigo can easily be reached by train from Padova.

4) COURSES **NOT OPEN** TO EXCHANGE STUDENTS

>>> **Restrictions** apply to course units from the following Master’s degree programme:

- IA0280, *Scienze delle Religioni (Interateneo)*: it is possible to attend only the course units offered in Padua

>>> On the course catalogue you can find for each course the indication whether a course is open or restricted. Click on the details of each course and check on Course unit for Erasmus students.

As a general rule, **the following courses are restricted**:

- IA2383, *Techniche, Patrimonio, Territori dell’Industria – Techniques, Patrimoine, Territoires de l’Industrie (Interateneo)*: all course units
- IA2451, *Filologia Moderna – Francesistica e Italianistica (Interateneo)*
- 2 ECTS/ 3 ECTS language courses (except for the Italian Language Laboratory offered by the CLA – Language Centre)
- *Computer Use (“Abilità informatiche”)*
- Laboratories/Excavations/Workshops: most of them are restricted, please check the restrictions for each activity on the course catalogue.




SCHOOL OF LAW

There are 3 degree programmes offered at the School of Law, 2 of them at Padua Campus (GI0270 *Law* and GI0269 *Employment Consultancy*) and 1 at Treviso Campus (GI2373 *Law*).

Exchange students can choose course units from all the 3 degree programmes, although they should consider that Treviso Campus is situated 60 kms from Padua (1 hour by train). Attendance, however, is not mandatory in most cases.

NON AVAILABLE COURSE UNITS:

“DDP-P” course units are NOT available for exchange students: these are special and reduced modules only for double degree students!!! The code “DDP-P” is specified next to the course unit name, as shown below:



GI0270	GIP7082323	DIRITTO AMMINISTRATIVO (DDP-P) Info e programma immatricolati A.A. 2015/16 Attuale A.A. 2017/18	9	Secondo semestre	ITA	ALESSANDRO CALEGARI
		DIRITTO AMMINISTRATIVO		Secondo		CRISTIANA



SCHOOL OF MEDICINE AND SURGERY

At the School of Medicine, **modules of “corsi integrati/integrated course units”** can be attended separately, but the grades and credits of such modules will not be registered in the booklet. Therefore, the student will receive an additional certificate attesting the passed module/s from the Mobility Unit desk of the School.

1) **LOGOPEDIA** (ME1849)

If you want to attend any course unit belonging to the degree programme in *Logopedia*, it is mandatory to have an Italian language proficiency no lower than the B2 level, according to the Common European Framework of Reference for Languages.

2) **CLINICAL ROTATION or TRAINEESHIP:**

In order to do practical activities in the University Hospital, you must send the “Immunization Review” to international.medicinachirurgia@unipd.it at least 45 days before your arrival. You can download the form at this webpage:

<https://www.medicinachirurgia.unipd.it/servizi/international>



The document must be signed and sealed by your physician. All certifications must be available before you may enter hospital wards. If you do not send your immunization review in due time, your internship will start later. If there aren't any practical activities in your Learning Agreement, you don't need to send any Immunization Review.

Clinical rotation/traineeship have a different management depending on the relevant degree programme:

- **MEDICINA** (ME1726, ME1727, ME1728, ME1729, ME2491): you must make a reservation through this platform
<https://www.rad.unipd.it/tirocini/login/login.php>

For all the other degree programmes, you must contact the responsible professor to agree on the period of your traineeship:

- *Odontoiatria* (ME1730): prof. Bressan eriberto.bressan@unipd.it
- *Infermieristica* (ME1844): prof. Zanotti renzo.zanotti@unipd.it
- *Fisioterapia* (ME1848): prof. Quinci antonio.quinci@unipd.it
- *Ostetricia* (ME1846): prof. Bordoni maria.bordoni@unipd.it
- *Scienze motorie* (IF0375): prof. Moro tatiana.moro@unipd.it
- *Logopedia* (ME1849): prof. Leorin cristian.leorin@unipd.it

3) in the 2nd semester, the Bachelor's degrees in **Dietistic** and **Nursing** start on 06/02/23 (before the official start of the second semester).

DEPARTMENT OF PHARMACEUTICAL SCIENCES



1) Courses **NOT AVAILABLE** for exchange students:

- FA01110942, *Tecnologia farmaceutica* (10 ECTS)
from the degree programme *Chimica e tecnologie farmaceutiche* (FA1733)
- The following course units from the degree programme *Farmacia* (FA1732):

MEP3051822	<i>Biologia vegetale e botanica farmaceutica</i> (6 ECTS)
MEP8082604	<i>Fisica con elementi di matematica</i> (6 ECTS)
MEP8082697	<i>Laboratorio propedeutico all'analisi di medicinali</i> (6 ECTS)
MEP3051823	<i>Biologia vegetale e botanica farmaceutica</i> (8 ECTS)
FAO2043794	<i>Tecnologia farmaceutica</i> (Iniziali cognome A-L) (11 ECTS)
FAO2043794	<i>Tecnologia farmaceutica</i> (Iniziali cognome M-Z) (11 ECTS)
FAL1002660	<i>Tirocinio</i> (30 ECTS)

2) You must **contact the responsible Professor** before choosing the following course units:

- MEP4068019, *Tossicologia* (6 ECTS) from the degree programme *Scienze farmaceutiche applicate* (FA0243)
- FAO2044609, *Tossicologia e farmacovigilanza* (9 ECTS) from the degree programme *Farmacia* (FA1732)
- The following course units from the degree programme *Pharmaceutical Biotechnologies* (ME2193):

MEP5070481	<i>Advanced molecular biology</i> (6 ECTS)
MEP5070482	<i>Drug discovery and development</i> (7 ECTS)
MEP5070479	<i>Protein engineering</i> (6 ECTS)
MEP7078597	<i>Biologics and biopharmaceuticals</i> (7 ECTS)
- The following course units from the degree programme *Chimica e tecnologie farmaceutiche* (FA1733)

FAO2043709	<i>Tossicologia</i> (6 ECTS)
MEP3052549	<i>Farmaci biotecnologici</i> (6 ECTS)
MEP3052595	<i>Sperimentazione preclinica e clinica dei farmaci</i> (6 ECTS)
MEP3052593	<i>Tecnologia del direccionamento e rilascio controllato dei farmaci</i> (6 ECTS)

3) For the course unit FAM1026978, *Analisi dei medicinali 1 e chimica analitica* (8 ECTS) from the degree programme *Chimica e tecnologie farmaceutiche* (FA1733), you need to have a **good Italian language proficiency**, because the course is entirely held in Italian and no adjustments can be made.



DEPARTMENT OF POLITICAL SCIENCE, LAW AND INTERNATIONAL STUDIES (SPGI)

1) **Courses NOT OPEN** to exchange students:

- SFM0014284 - *Lingua straniera: francese* (3 ECTS)
- SFM0014286 - *Lingua straniera: inglese* (3 ECTS)
- SFM0014287 - *Lingua straniera: spagnolo* (3 ECTS)
- SFM0014285 - *Lingua straniera: tedesco* (3 ECTS)
- *Laboratory of interdisciplinary formation* (3 ECTS)
- *Integrated urban-rural development policies laboratory* (3 ECTS)
- *Stage/Internship*

2) Bachelor level courses at the SPGI Department:

At the SPGI Department, most of the Bachelor level courses are held in Italian.

For some courses, **students and teachers can agree on a vehicular language for the exam.**

You can download from this link a list of courses whose exam can be taken in English (or other languages):

[https://www.spgi.unipd.it/sites/spgi.unipd.it/files/19-20.Lista% \[...\]](https://www.spgi.unipd.it/sites/spgi.unipd.it/files/19-20.Lista%20corsi%20in%20inglese.pdf)

Please check in the course catalogue if the course is available and contact the responsible professor after your arrival to request to take the exam in a vehicular language.

ATTENTION! For courses belonging to the Bachelor's degree in **SERVIZIO SOCIALE / SOCIAL WORK** (SF1330) students must:

- be able to read books and articles in Italian
- contact the professor responsible for the course at the beginning of the semester to be admitted

3) Master courses at SPGI Department:

Bachelor students CANNOT choose course units from the Master's degree programme in "Human Rights and Multi level Governance", unless they're enrolled in their 4th year of first cycle degree. Law students coming from University of Limerick can be accepted from their 3rd year.

The other Bachelor students can choose course units from OTHER Master's degree programmes: in this case, they should check the prerequisites in the syllabus of each course unit.

IMPORTANT! Bachelor students should know that if they intend to enroll in a Master's degree programme in Padua in the future, they might not be able to do so if they took any courses from that Master's degree programme during their Erasmus Mobility.

SCHOOL OF PSYCHOLOGY

1) You can choose course units from every 1st and 2nd cycle degree programme (= Bachelor and Master) of the School of Psychology.

- If you are a Bachelor student and you are interested in our Master course units, just check in the syllabus if you have the right prerequisites in order to take them.
- If you are a Master student and you are interested in our Bachelor course units, just take into account that some topics may be too easy for your background
- We do not offer doctoral courses for credits: PhD students are allowed to take courses from 2nd cycle degrees (Master) and are asked to agree a thesis/project research with one of the professors teaching in our doctoral school. For more info, please contact the Mobility unit desk at the School: erasmus.psicologia@unipd.it

2) **RESTRICTIONS** for Master Degree programmes **entirely held in English**:

- *Cognitive Neuroscience and Clinical Neuropsychology*
- *Clinical social and Intercultural Psychology*

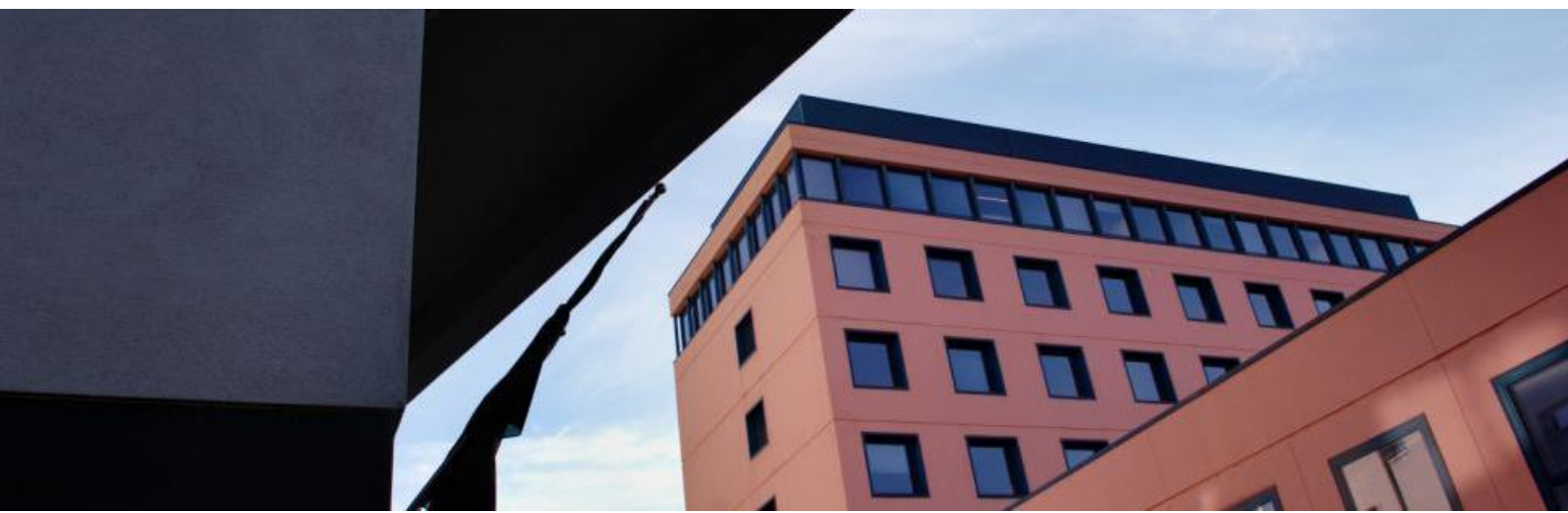
2nd year Bachelor students CANNOT attend the course units belonging to these Ma Degree programmes.

3rd year Bachelor students may attend but they must have the pre-requisites mentioned in the course units' syllabuses published in the course catalogue.

3) You can choose course units from our distance learning Bachelor Degree programmes *Scienze e tecniche Psicologiche (L5)* and *Techniques and Methods in Psychological Sciences (TeMPS)*. Lectures are held on-line only.

4) Timetables will not clash if you choose course units from the same year of the same degree programme.

5) You are **NOT ALLOWED** to choose 2, 3 and 5 CFU (=ECTS credits) course units held at the School of Psychology (*Abilità informatiche, Lingua inglese per la psicologia, Computer skills, Academic English*, all seminars/labs belonging to 2nd cycle degree courses).





SCHOOL OF SCIENCE

If you want to add in your LA the following courses offered by the School of Science, you must **ask in advance for the permission to attend the classes** to the responsible professor:

- SCP3049590, *Laboratorio di preparazione e caratterizzazione dei materiali 2* (9 ECTS)
- SCN1037879, *Metodi Fisici di Caratterizzazione dei Materiali e Laboratorio* (10 ECTS)
- SCN1036077, *Chimica Fisica 4* (10 ECTS)
- SCN1036085, *Chimica Organica 4* (10 ECTS)
- SCN1036078, *Chimica Inorganica 3* (10 ECTS)
- SCN1037407, *Chimica Industriale Macromolecolare* (9 ECTS)
- SC02119323, *Spettroscopie Applicate* (6 ECTS)
- SCN1037413, *Chimica Organica Industriale* (9 ECTS)
- SCN1037405, *Chimica Fisica Industriale II* (6 ECTS)

BACHELOR STUDENTS ONLY: there are few course units held in English at Bachelor level, you are allowed to attend Master level courses, but be careful! Master level courses may be very advanced and you may not have the sufficient background. Please check carefully the pre-requisites in the Course Catalogue.



6) TIMETABLE AND ACADEMIC CALENDAR

- You can check the key academic dates in the Academic Calendar, which is available here: <https://www.unipd.it/en/key-academic-dates>
- Class timetable and assigned classrooms will be available in Italian/English/Spanish approximately **2 weeks before classes start**: <http://www.gestionedidattica.unipd.it/PortaleStudenti/>
- Don't forget that **some degree programmes may start earlier**: for example, in the 1st semester the Master's degree in Forest Science starts on 26/09/2022; in the 2nd semester the Bachelor's degrees in Dietistic and Nursing start on 06/02/2023.
- Exams schedule will be available here: https://uniweb.unipd.it/ListaAppelliOfferta.do?menu_opened_cod=menu_link-navbox_didattica_Esami

7) CONTACTS

For support and information about administrative procedures and general issues (such as: Application form, Accommodation form, Buddy Service, Fiscal Code, Acceptance/Invitation letter, Welcome days, enrolment, arrival certificate) you can contact the Central Desk of the Mobility Unit: erasmus.incoming@unipd.it

For info about courses, thesis, traineeship, or other academic issues related to a specific area of study, you can contact the Mobility Unit desk at the School/Department.

At the following webpage you can find their contacts:

<https://www.unipd.it/en/desks-and-contacts>

